



MWFRA 2015 COVERAGE

Highlights for 2015

November 2015

Highlights

- MWFA participants benefited from MWFRA's superior 2015 coverage

Age Group	Outcome	Δ 2014	Rank 2012-2015
Junior Boys	90.6%	+3.1%	1 st
Junior Girls	90.8%	+4.5%	1 st
Senior Men	97.5%	+2.8%	1 st
Senior Women	98.4%	-0.5%	2 nd
All Div 1	97.1%	+2.1%	1 st
All Appointed	94.0%	+2.3%	1 st
% of Divs with increased Cov%	89.7%	Avg increase% =	+6.0%
% of Divs with decreased Cov%	10.3%	Avg decrease% =	-2.2%

Highlights

- This was despite significant coverage challenges from increased matches

'Main Comp'	No. of Matches	vs 2014	vs Avg 2014-2012
All-appointable	4,917	+221	+289
Junior Boys	1,386	+109	+115
Senior Men	767	+33	+83
Junior Girls	655	-30	+9
Senior Women	770	+57	+63

- And replays pushing peak load to Sundays and double-header weekends

Weekends with ...	2015	2014
>250 matches	5	0
225-249 matches	2	1
200-224 matches	5	4
<200 matches	12	19

Highlights

- We increased the % of full-crew matches (though PL down vs 2014, up vs Avg)

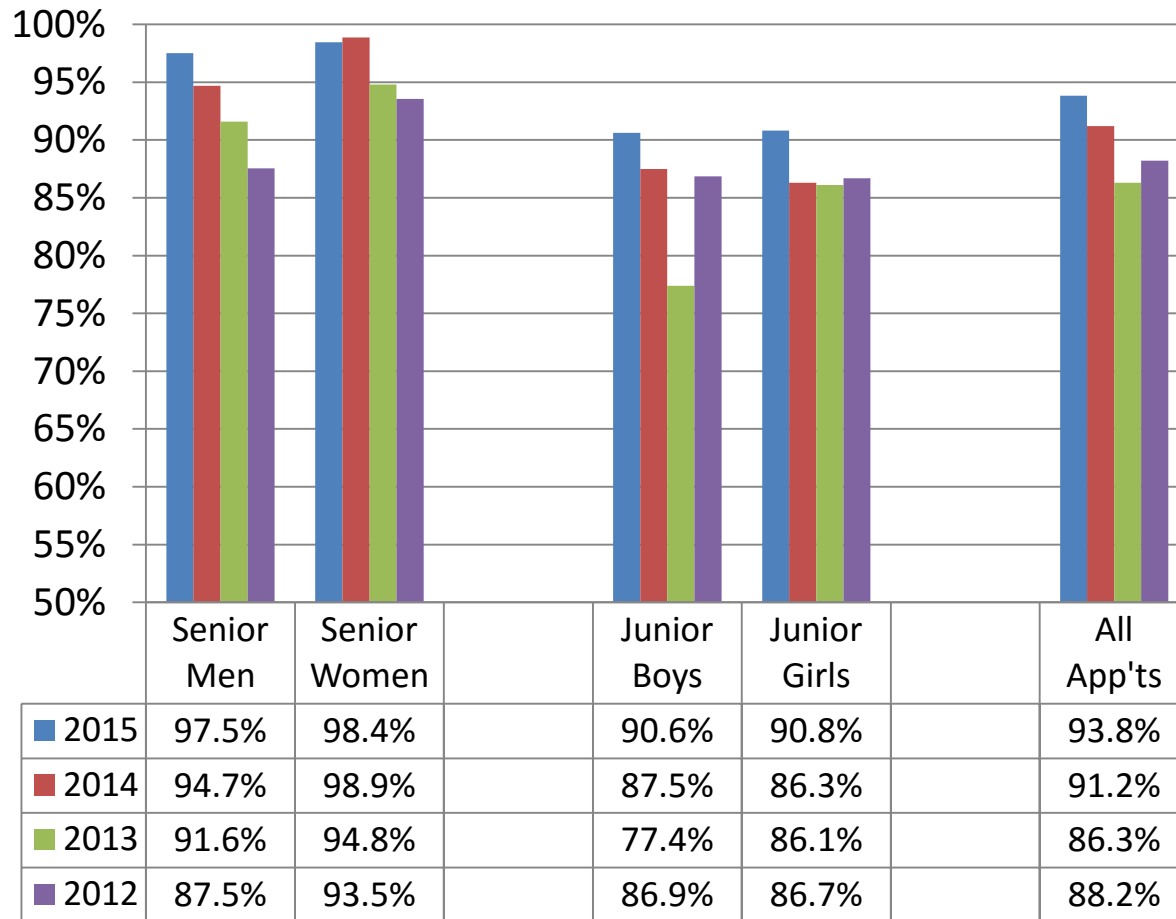
Age/Div		2015	vs 2014	vs Avg 2014-2012
PL+R	4-crew	79%	-6%	+1.4%
AL/1+R	3-crew	85%	+6%	+2.9%
U18s	3-crew	67%	+14%	+18%
WPL+R	3&4-crew	91%	+16%	+28%
W18s	3-crew	36%	+13%	+16%

- And decreased the % of 'novice' ARs as 1st & 2nd yrs

Age/Div		2015	vs 2014	vs Avg 2014-2012
PL+R		25%	-27%	-15%
AL/1+R		17%	-28%	-32%
U18/1s		43%	-22%	-28%
WPL+R		11%	-36%	-30%

%Coverage – 2012 to 2015

All 'Main' Matches

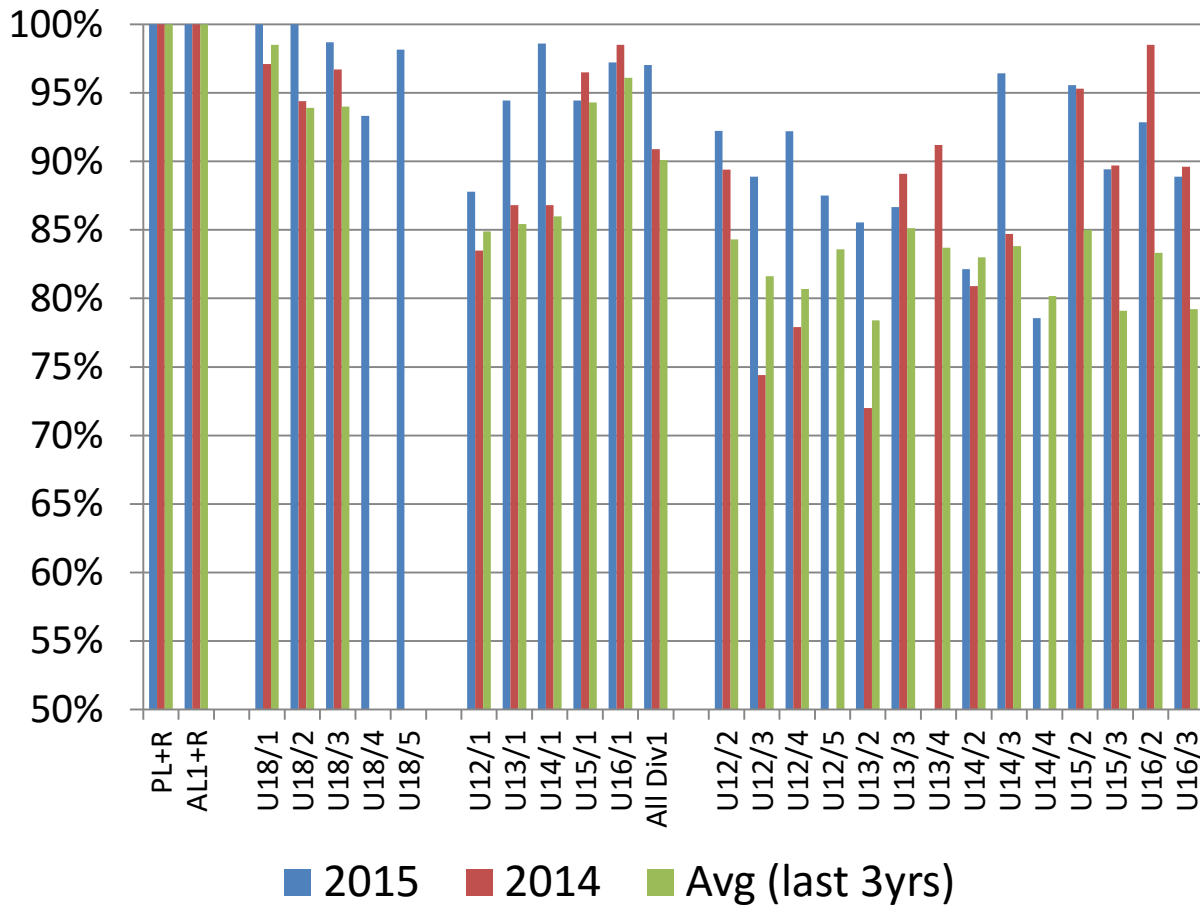


Key Points:

- >90% in all categories
- Improved or sustained gains made in 2014

%Coverage – 2015 vs 2014, Avg(last 3 yrs)

Boys & Men

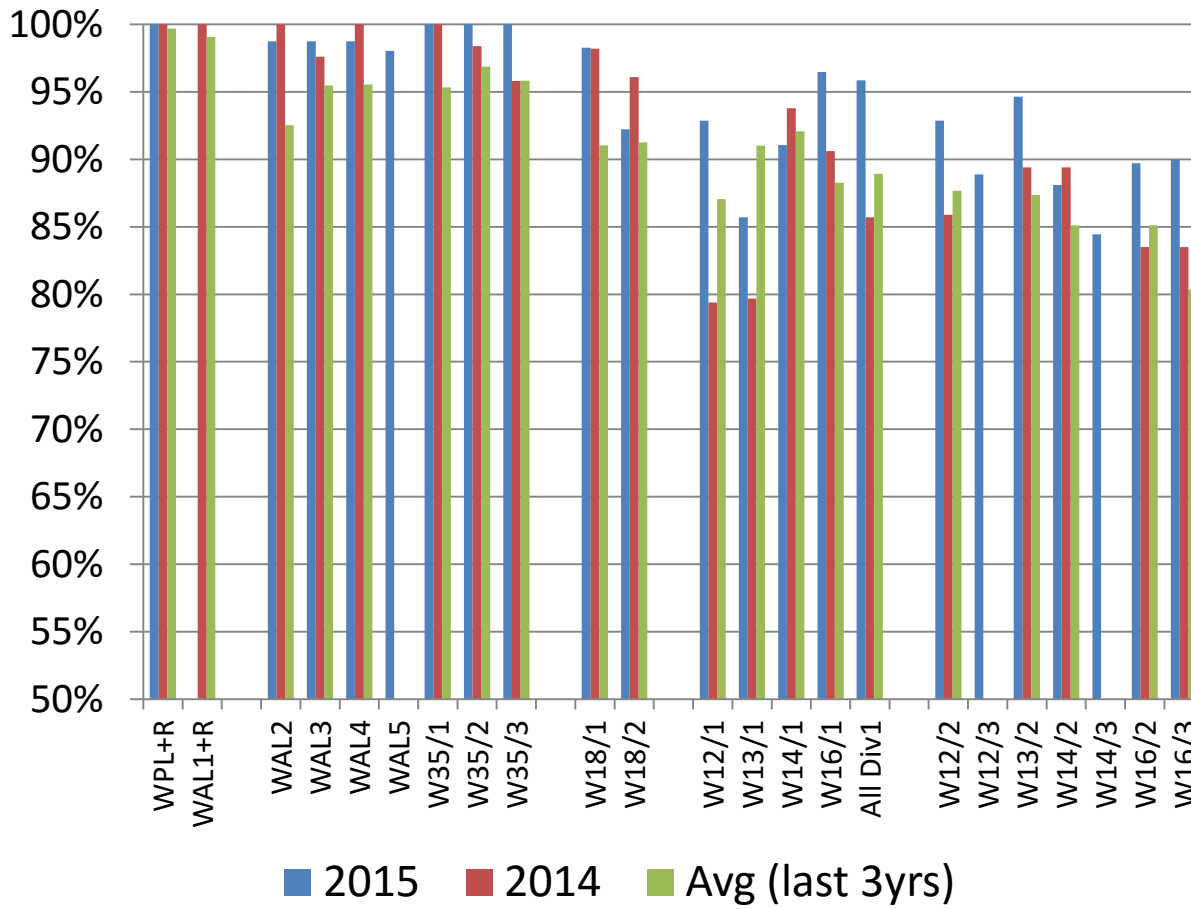


Key Points:

- Extended 100% from PL & AL1 to U18/1 & U18/2
- Gains in most Div 1s
- 15 Divs better than 2014
- 7 Divs not better than 2014 but better than Avg
- U14/4s better than last played 2013 but lower than Avg

%Coverage – 2015 vs 2014, Avg(last 3yrs)

Girls & Women

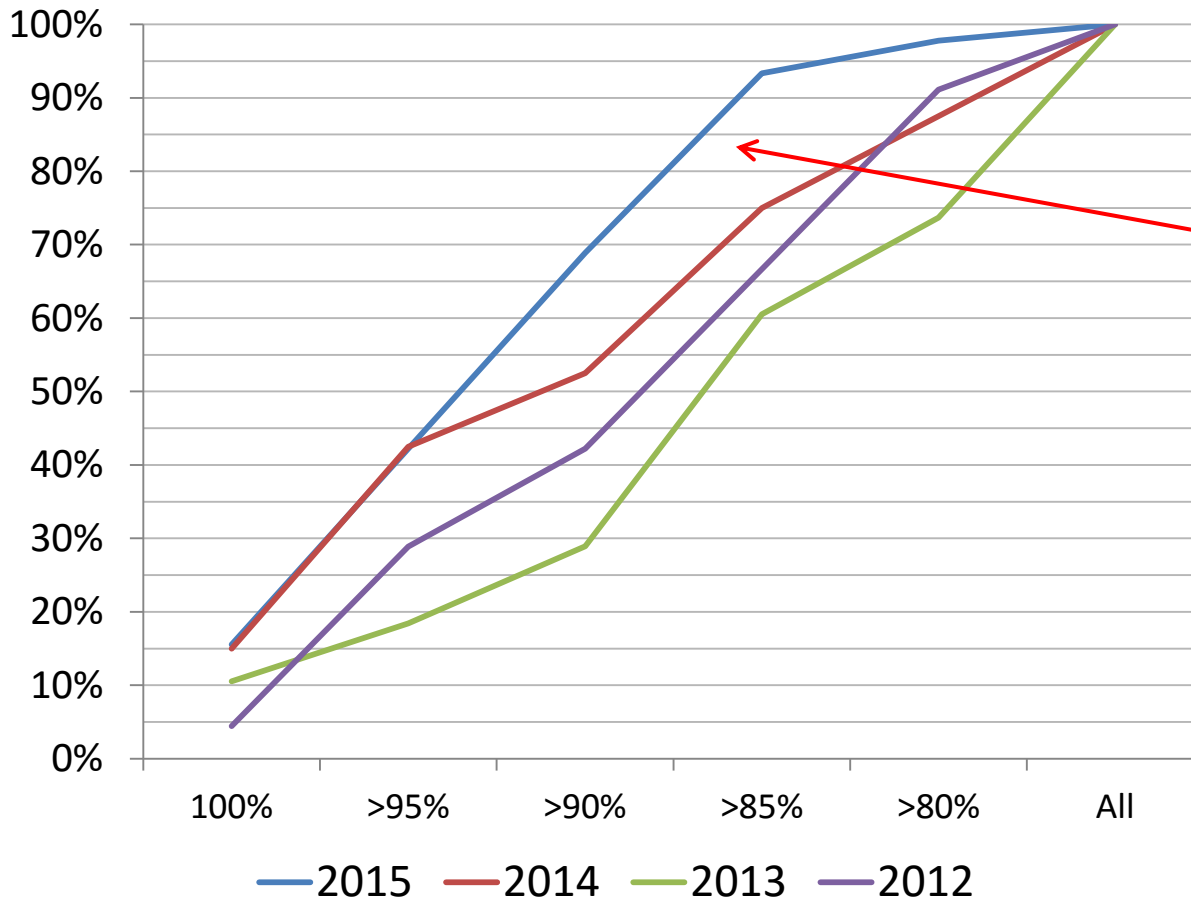


Key Points:

- Extended 100% from WPL & W35/1 to W35/2 & W35/3
- Gains in most Div 1s
- 13 Divs better than 2014
- 4 Divs not better than 2014 but better than Avg
- W14/1s still >90% but lower than 2014 & Avg

%Coverage – Age/Divs by Cov%

Cumulative % of Age/Divs by Cov%

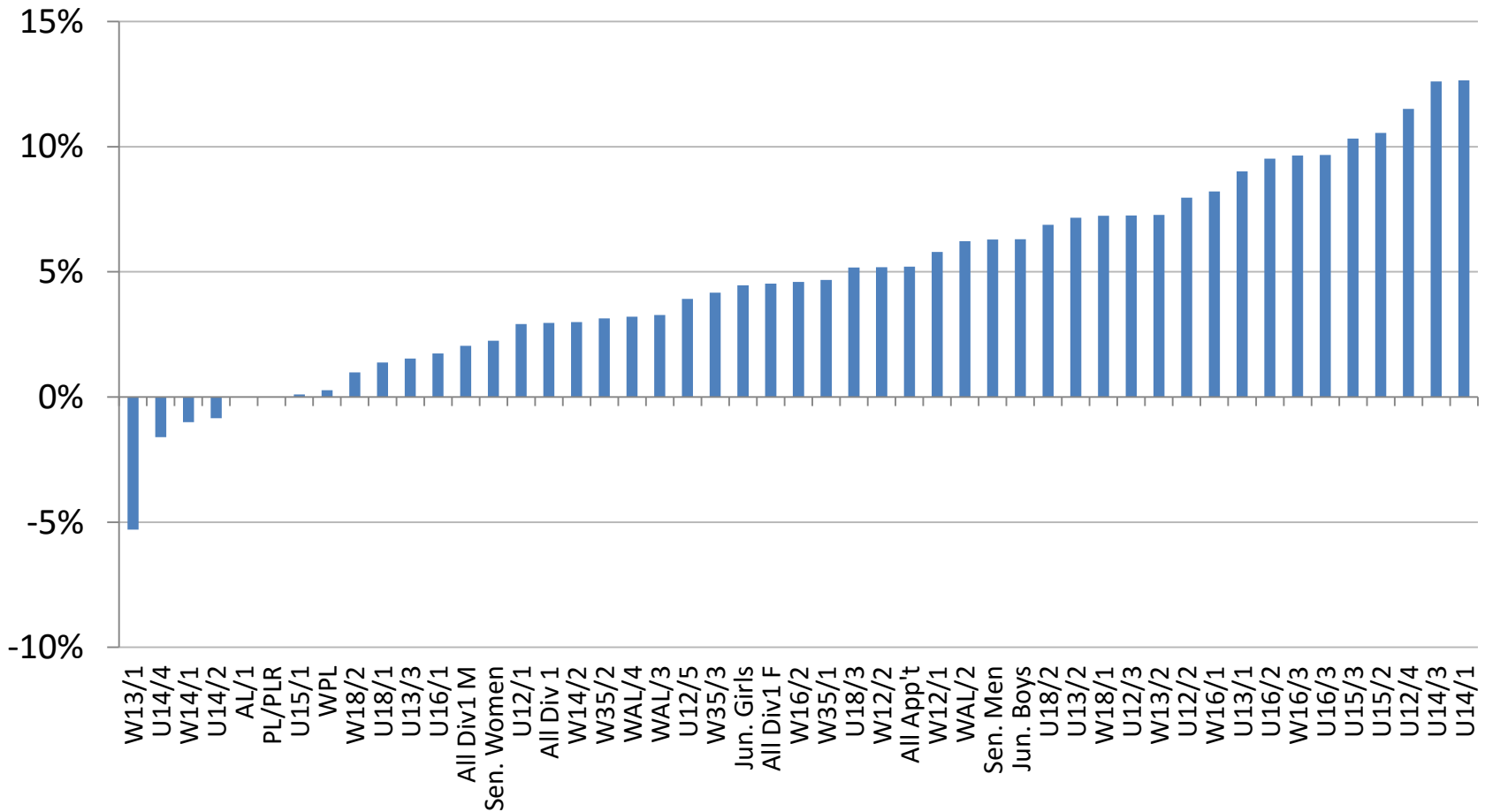


Key Points:

- >95% coverage achieved for 42% of Age/Divs in 2015 - same as in 2014
- Significant gain in coverage for other Age/Divs - in 2015, 93% of Age/Divs had >85% coverage
- IE sustaining the high Cov% Age/Divs AND lifting the Cov% for other Age/Divs

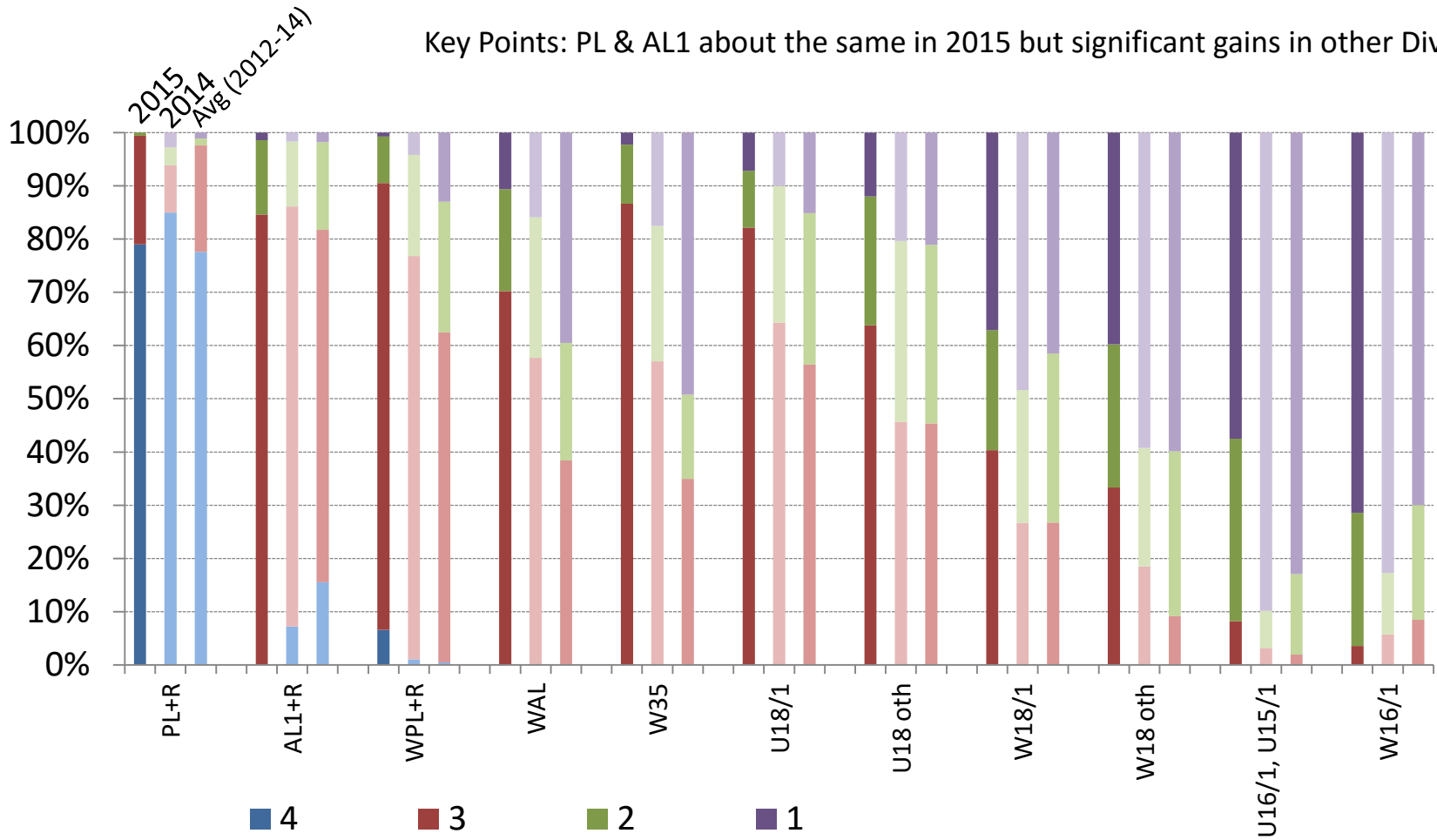
%Coverage – 2015 vs Avg (last 3 yrs)

Key Point: 37 of 41 Age/Divs better than Avg 2012-2014



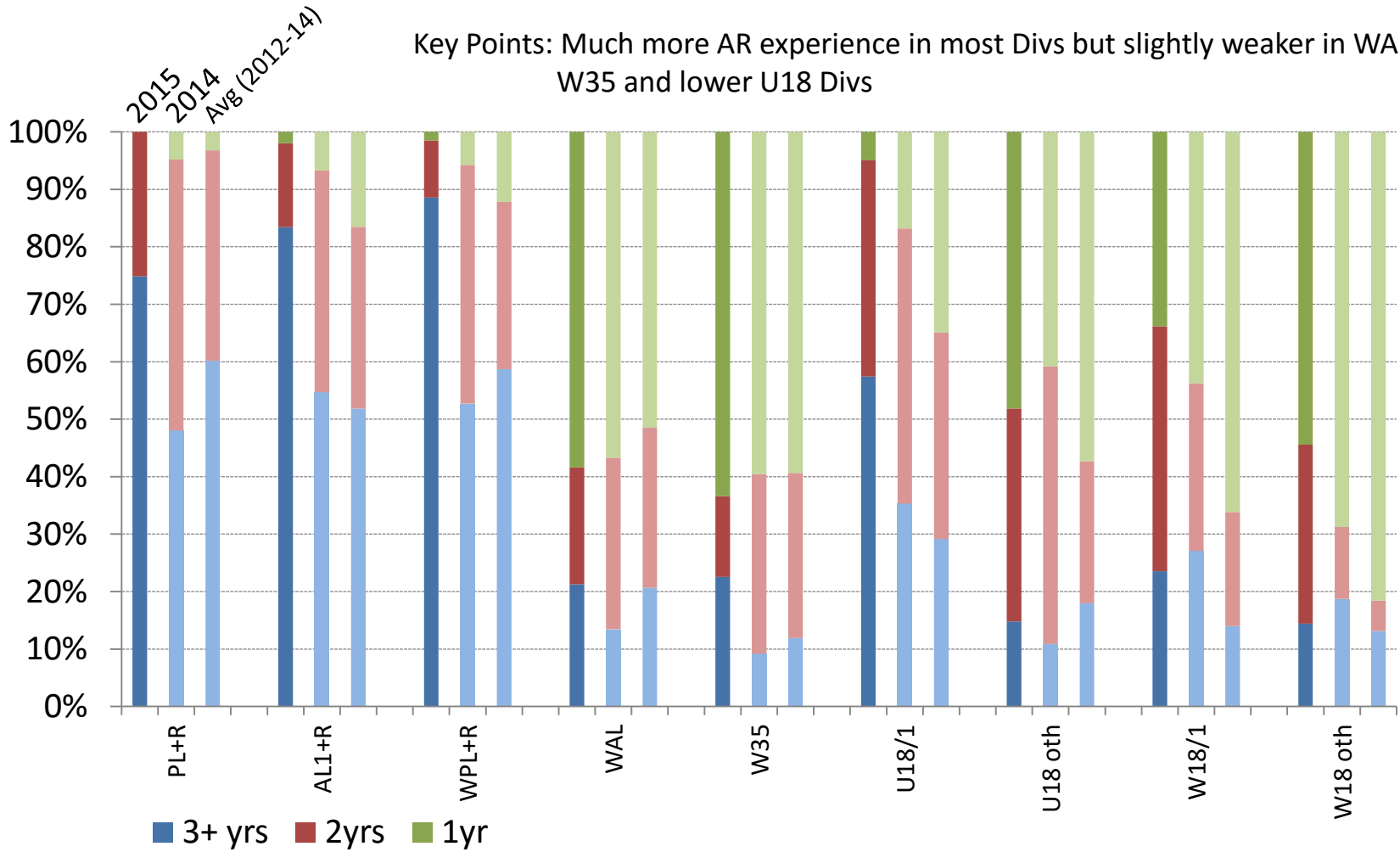
Coverage by No. of Officials

Key Points: PL & AL1 are about the same in 2015 but significant gains in other Divs

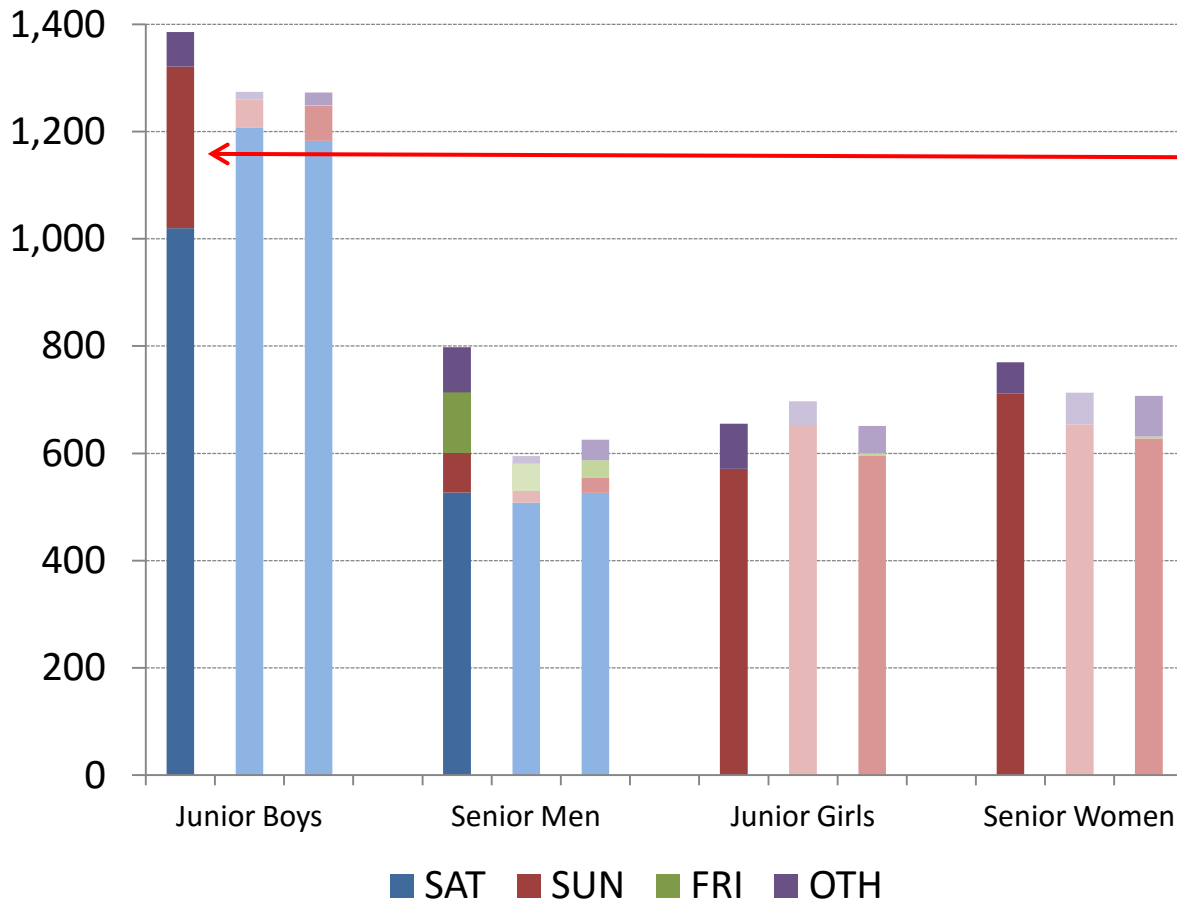


Coverage by AR Experience

Key Points: Much more AR experience in most Divs but slightly weaker in WAL, W35 and lower U18 Divs



No. of Matches by Age/Div by Day



Key Points:

- More matches in 2015
- Replays shifted 26% of all Junior Boys to Sunday or midweek
- But MWFRA responded with better Boys AND Girls coverage

	2015	Avg '12-'14
Boys played SAT AM	90.9%	84.8%
Boys played SUN AM	88.7%	78.7%
Girls played SUN AM	90.5%	85.8%

No. of Matches per SAT or SUN

Key Points: Sundays displace Saturdays as peak load days

Sundays are Top 4 match-days in 2015, 6 of Top 10 & 9 of Top 20

