



MWFRA 2016 COVERAGE

Highlights for 2016

November 2016

Highlights

- MWFA participants benefited from MWFRA's superior 2016 coverage

Age Group	Outcome	Δ 2015	Rank 2012-2016
Junior Boys	93.3%	+2.7%	1 st
Junior Girls	94.4%	+3.6%	1 st
Senior Men	97.9%	+0.4%	1 st
Senior Women	98.6%	+0.2%	2 nd
All Div 1	95.8%	-1.3%	2 nd
All Appointed	95.7%	+1.7%	1 st
% of Divs with increased/same Cov%	69.0%	Avg increase% =	+3.7%
% of Divs with decreased Cov%	31.0%	Avg decrease% =	-2.9%

Highlights

- This was despite significant coverage challenges from increased matches

'Main Comp'	No. of Matches	vs 2015	vs Avg 2015-2013
All-appointable	5,316	+399	+629
Junior Boys	1,529	+143	+273
Senior Men	798	+31	+64
Junior Girls	825	+170	+179
Senior Women	792	+22	+54

- And >200 matches per weekend is the new normal

Weekends with ...	2016	2015	2014
>250 matches	2	5	0
225-249 matches	1	2	1
200-224 matches	11	5	4
<200 matches	6	12	19

Highlights

- We increased the % of full-crew matches

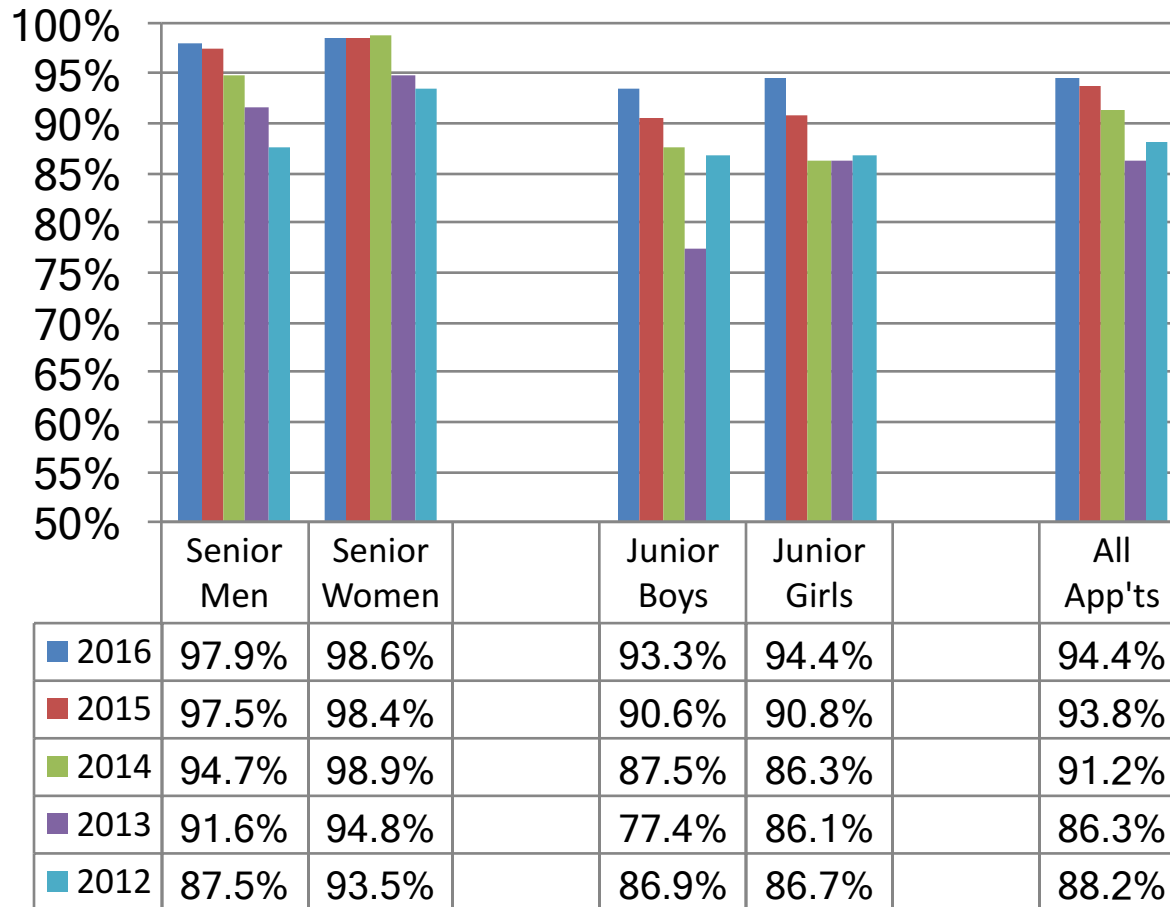
Age/Div		2016	vs 2015	vs Avg 2015-2013
PL+R	4-crew	98%	+19%	+16%
AL/1+R	3&4-crew	90%	+6%	+9%
U18s	3-crew	83%	+16%	+29%
WPL+R	3&4-crew	97%	+6%	+30%
W18s	3-crew	51%	+25%	+19%

- The % of 'novice' ARs as 1st & 2nd yrs only decreased for PL but mostly better than past 3yr Avgs

Age/Div		2016	vs 2015	vs Avg 2015-2013
PL+R		15%	-10%	-28%
AL/1+R		45%	+28%	+5%
U18/1s		43%	+0%	-23%
WPL+R		18%	+7%	-17%

%Coverage – 2012 to 2016

All 'Main' Matches

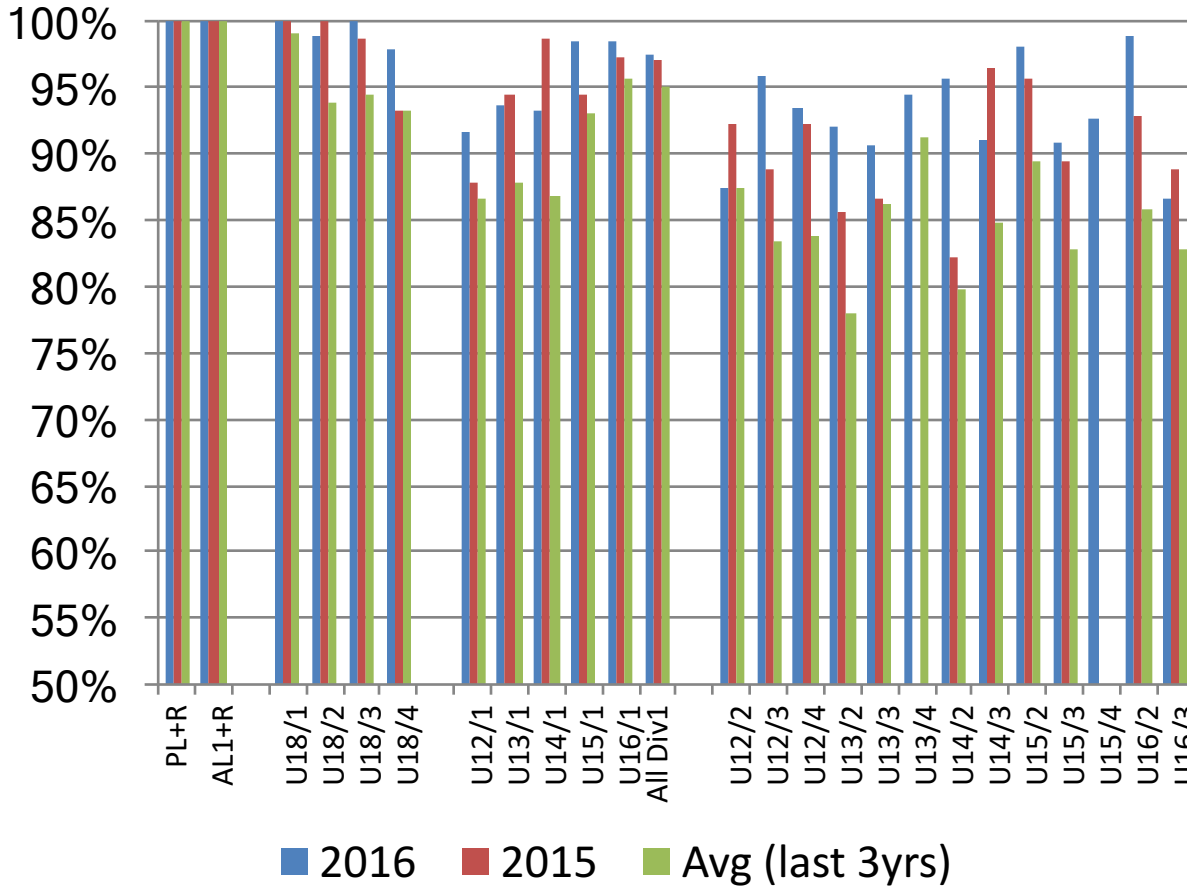


Key Points:

- >90% in all categories, nudging 95%
- Improved or sustained gains made in 2015

%Coverage – 2016 vs 2015, Avg(last 3 yrs)

Boys & Men

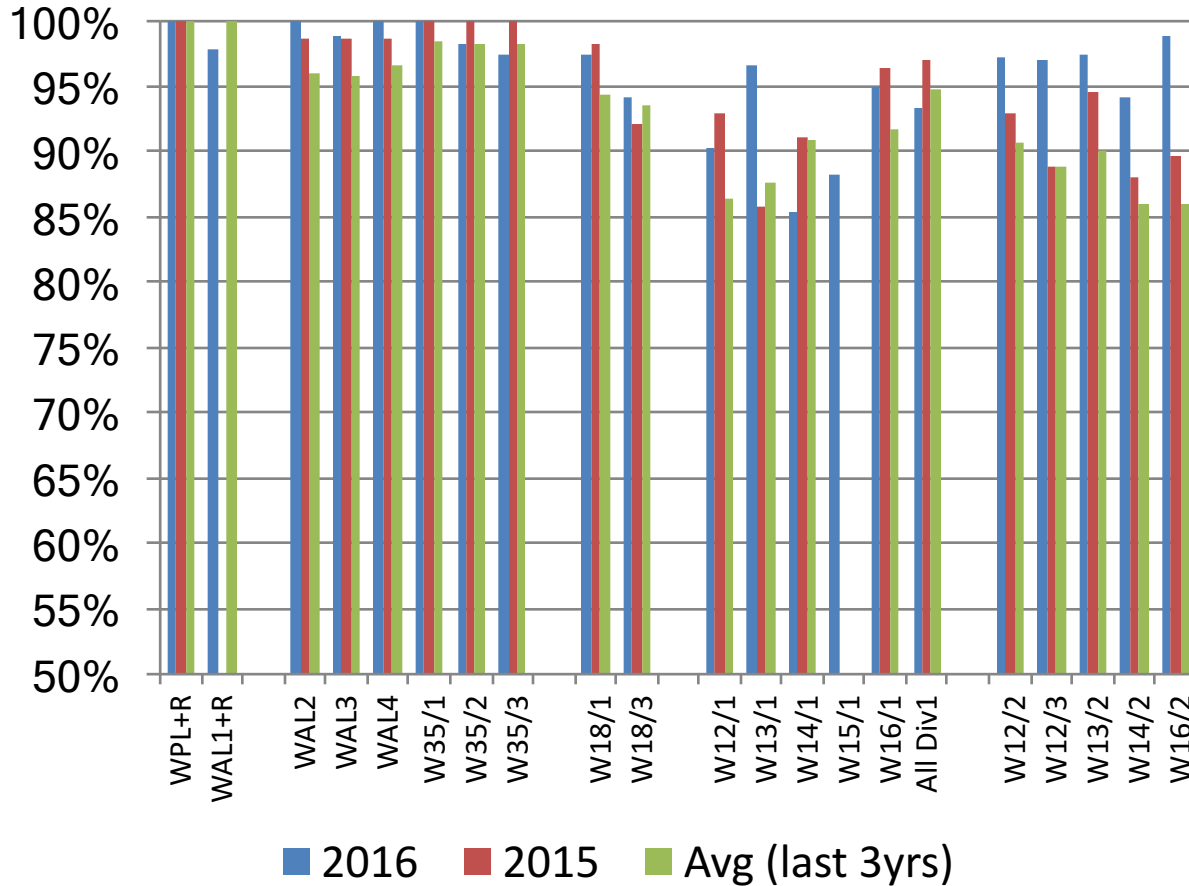


Key Points:

- Sustaining 100% for PL, AL1 & U18/1, >95% for other U18s
- All Div 1s >90%, 5 of 8 >95%
- 16 of 22 Divs better than 2015
- All but 1 Div better than Avg (nb U12/2s 87.4% vs 87.5%)

%Coverage – 2016 vs 2015, Avg(last 3 yrs)

Girls & Women

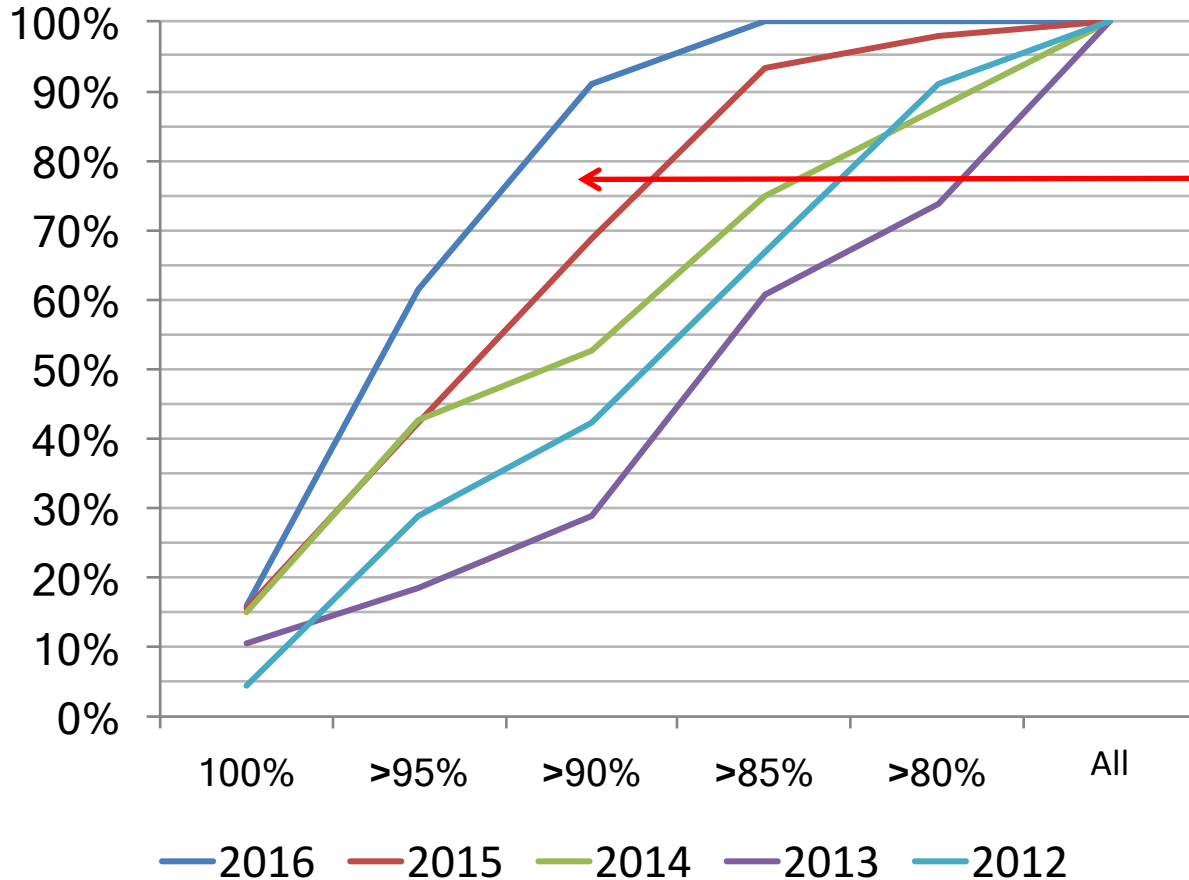


Key Points:

- Sustained 100% for WPL
- 5 of 8 WAL/W35/W18 better
- Mixed results in Junior Girls Div 1s
- Big gains in other Junior Girls Divs

%Coverage – Age/Divs by Cov%

Cumulative % of Age/Divs by Cov%



Key Points:

- ≥95% coverage achieved for 61% of Age/Divs in 2016 - up from 42% in 2015
- Now 91% of Age/Divs ≥90% coverage and 100% ≥85%

%Coverage – 2016 vs Avg (last 3 yrs)

Key Point: 38 of 42 Age/Divs better than Avg 2013-2015

