



MWFRA 2014 COVERAGE

Report to Members,
MWFA and Clubs

November 2014

Summary

- 3,232 regular season games – up 141 on 2013
- 180 Junior Refs & 177 Seniors – up 10 on 2013
- 92.6% coverage of All Games – up 2.8% on 2013
- Most improved coverage in Junior Boys 87.3% (+9.9%) and Senior Women 99.2% (+4.4%)

- 31 of 40 individual divisions had better coverage
 - Most improved were lower division 15s & 16s and U14/1
 - Weakest for some 12s & 13s, particularly Girls games
- 120 more games got full Centre+2 ARs crews and ARs were more experienced

Summary

- Coverage success factors
 - persistence in appointments, overcoming declines
 - bulge in U16 Ref numbers and 25% more games by each U16 Ref
 - increased willingness of Seniors to take junior game appointments
- Coverage weak spots
 - less use of U14 & U15 Refs as Centre Refs contributing to lower coverage in 12s & 13s
- Other coverage factors
 - 8:30 KOs not the black-hole time of 2013 (and all times better in 2014)
 - some grounds recurring as worse coverage than others but the grounds and effects vary and this is not a clear coverage factor
 - The ‘Start-up’ of Weeks 1 & 2 does seem to be 70-80% coverage rather than 80-90% in later weeks; end-of-season ‘fatigue’ may have been a 2013 factor but not so observed in 2014

Games Demand – 2014 vs 2013, 2012

Boys & Men

Age Group	2012	2013	2014	Δ
U11	316			
U12	297	289	319	+30
U13	226	242	237	-5
U14	223	218	232	+14
U15	162	208	230	+22
U16	152	149	224	+75
U18	221	256	232	-24
AL1/R	220	220	180	-40
PL/R	178	180	180	+0
TOTAL	1,995	1,762	1,834	+72

Data is:

- Regular season
- Excluding SF & GF days
- As-played not as-scheduled
- Excludes other competitions
e.g. MWFA Cup, State Cup, State League

Key Points:

- 50% more U16 games
(following +28% U15 games in 2013)
- 40 fewer AL1/R – return to 10 teams
- +/- c.10% in other ages
- Net 72 more games to cover

Games Demand – 2014 vs 2013, 2012

Girls & Women

Age Group	2012	2013	2014	Δ
W11	110			
W12	115	134	132	-2
W13	101	118	149	+31
W14	131	120	149	+29
W16	193	225	255	+30
W18	141	99	106	+7
WAL1/R	108	102		-102
WPL/R	109	126	190	+64
WALs	(159)	233	239	+6
W35s	(156)	172	178	+6
TOTAL	1,008	1,329	1,398	+69

Data is:

- Regular season
- Excluding SF & GF days
- As-played not as-scheduled

Key Points:

- 89 more W12 to W16 games
- 38 fewer WPL/WAL1 games
- Net 69 more games to cover

Games Demand – other competitions

MWFRA also supplies match officials to other competitions, which can affect coverage of MWFA regular games

Competition	Occurrence	Games Demand
Trial games	Pre-season	101 games, 14 game-days
Manly United games	Saturdays, Sundays	152 games, 39 game-days
MWFA Challenge Cup – Men	Weekend & Midweek	15 games, 5 game-days
MWFA Challenge Cup – Women	Weekend & Midweek	12 games, 6 game-days
FNSW State Cup	Sundays, 1 Saturday	46 games, 6 game-days
PSSA Gala Days	Boys & Girls, Friday	15 games, 1 game-day
PSSA Finals	Boys & Girls, Friday	6 games, 1 game-day
Champion of Champions	Post-season	31 games, 4 game-days
	TOTAL =>	360 games, 69 game-days

Referee Supply – 2014 vs 2013

Category	2013	2014					
		Return	New	Δ Cat.	Total	Change	Active
Juniors	173	118	73	-11	180	+7	168
Seniors	102	80	10	+18	108	+6	91
Senior (TR)	23	15	23	+8	46	+23	46
TR (Appts)	49	41	8	-26	23	-26	23
Team Ref only	338	231	94	+11	336	-2	280
TOTAL	685	485	208	0	693	+8	608

Notes:

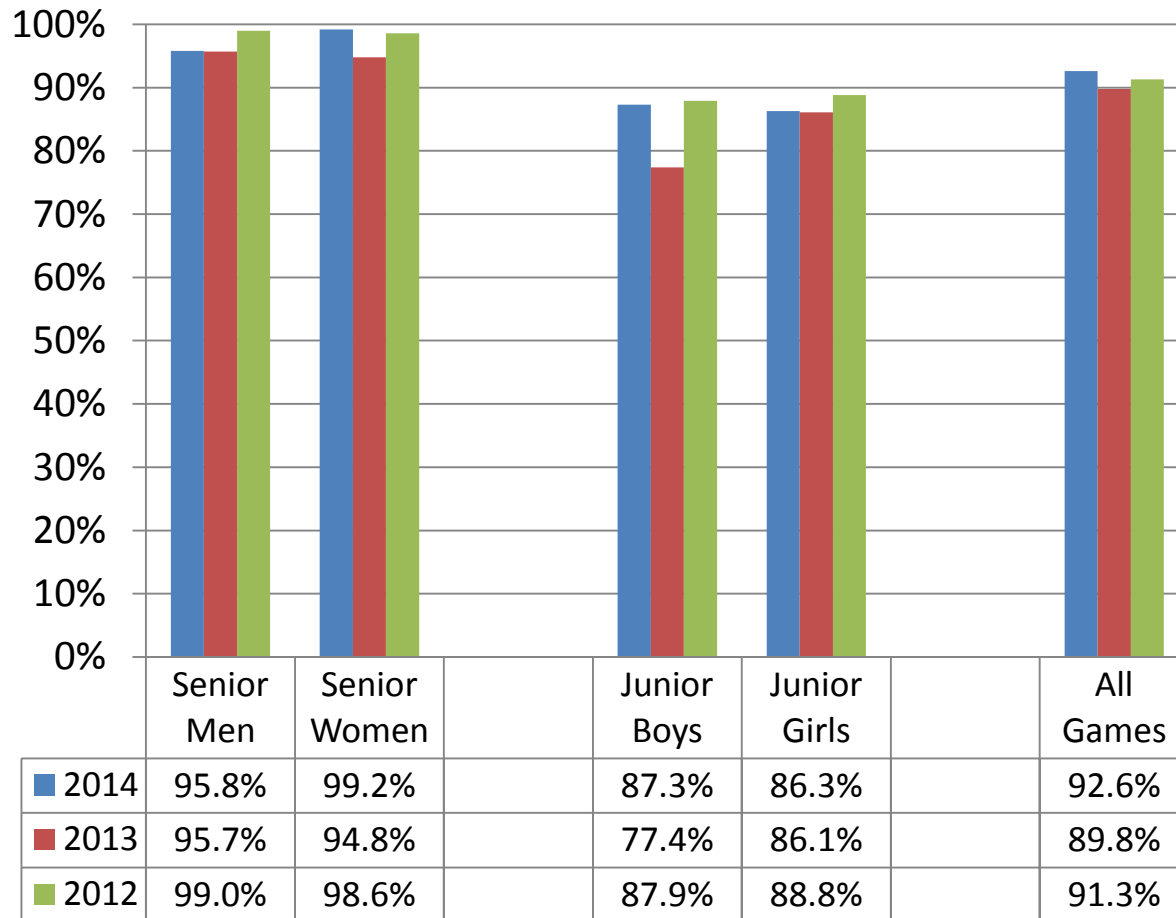
- 'Senior (TR)' is a Senior Ref who is also a Team Ref
- 'TR (Appts)' is a Team Ref who also takes Appointments
- 'Δ Cat.' means a change in category by a returning ref
e.g. returning Juniors who turn 18 and become Seniors
e.g. returning Team Refs who switch to being Seniors

Key Points:

- Stable overall
- In category changes, 26 TRs switched to more Appts-focus & 23 to more TR-focus
- Non-return rate dropped from 40% to 29%
- especially Juniors dropped from 48% to 31%
- Active% slightly down from 89% to 88%

%Coverage – 2014 vs 2013, 2012

All Regular Season Games

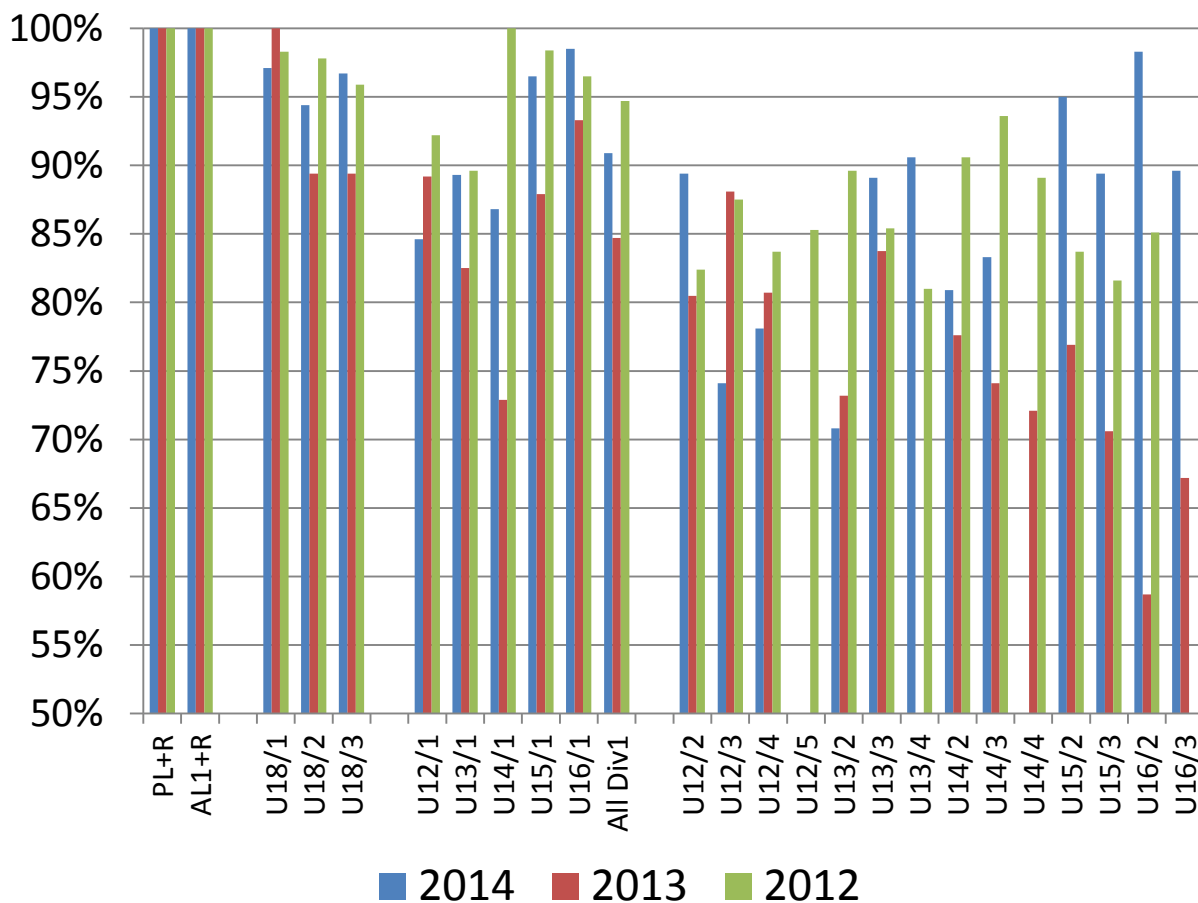


Key Points:

- +9.9% rebound in Junior Boys
- Nearly 100% in Senior Women
- Stable Senior Men, Junior Girls
- Back above 90% for All Games

%Coverage – 2014 vs 2013, 2012

Boys & Men

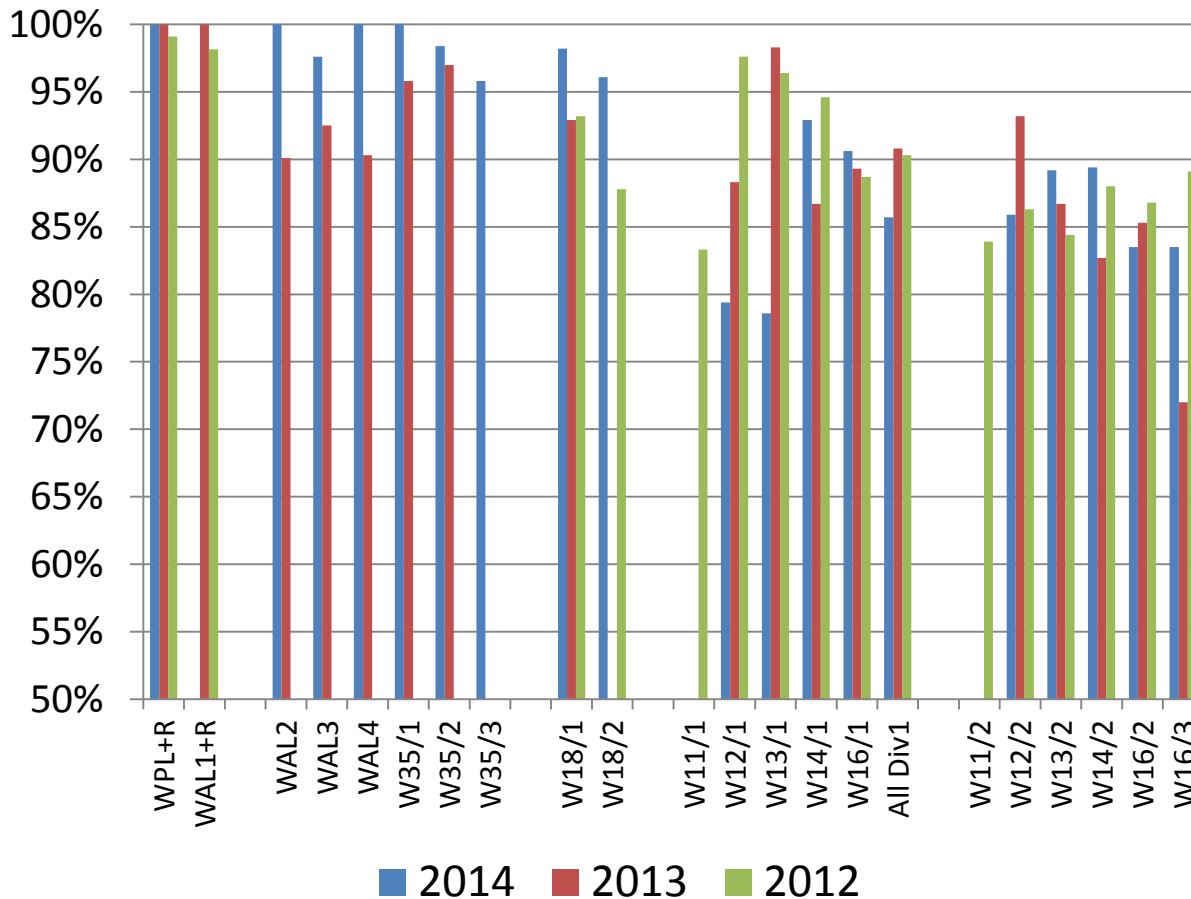


Key Points:

- Stronger in almost all Age/Divs
- Much better in non-Div 1s
- Weaker in most U12s and in U13/2

%Coverage – 2014 vs 2013, 2012

Girls & Women

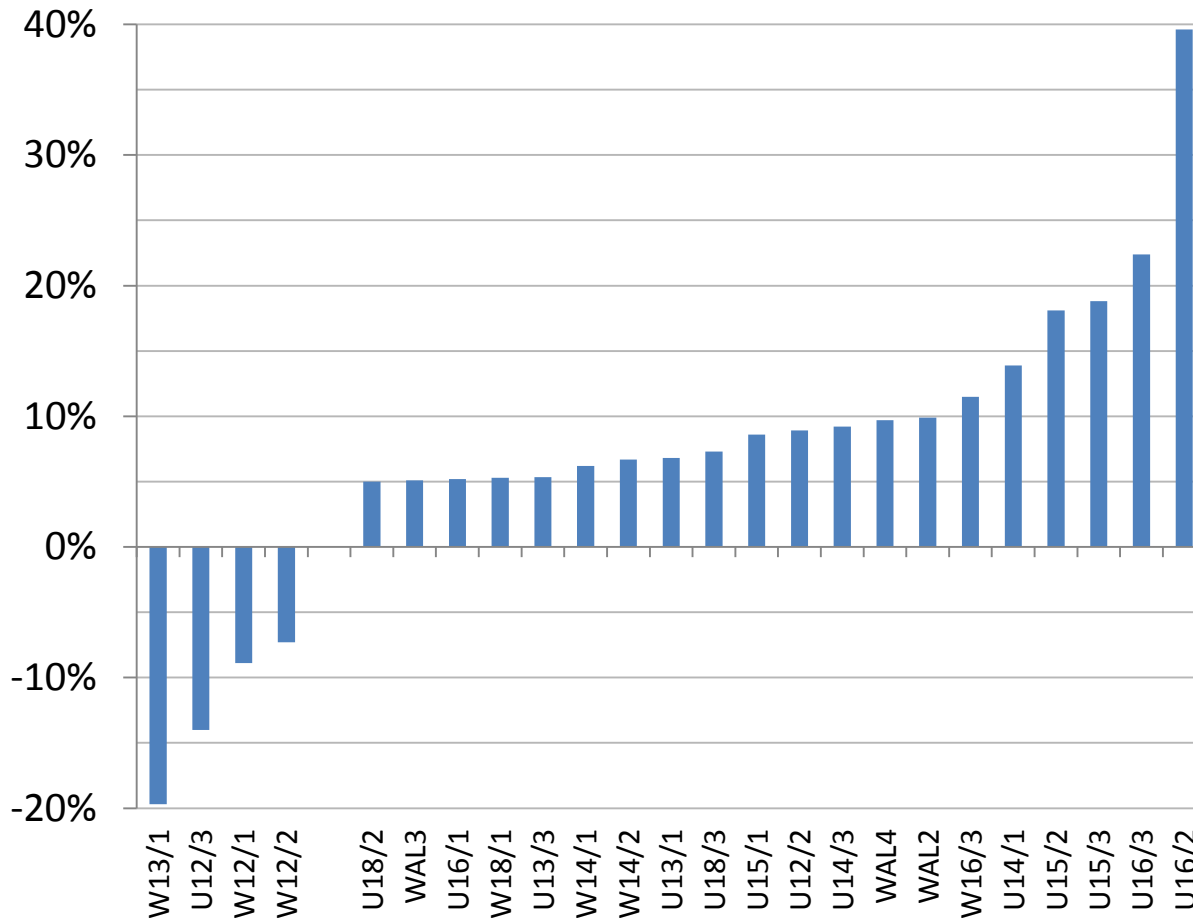


Key Points:

- Stronger in Senior Women and W16/3
- Weaker in W12s & W13s
- Generally +/- small changes in W14s & W16s

%Coverage – 2014 vs 2013

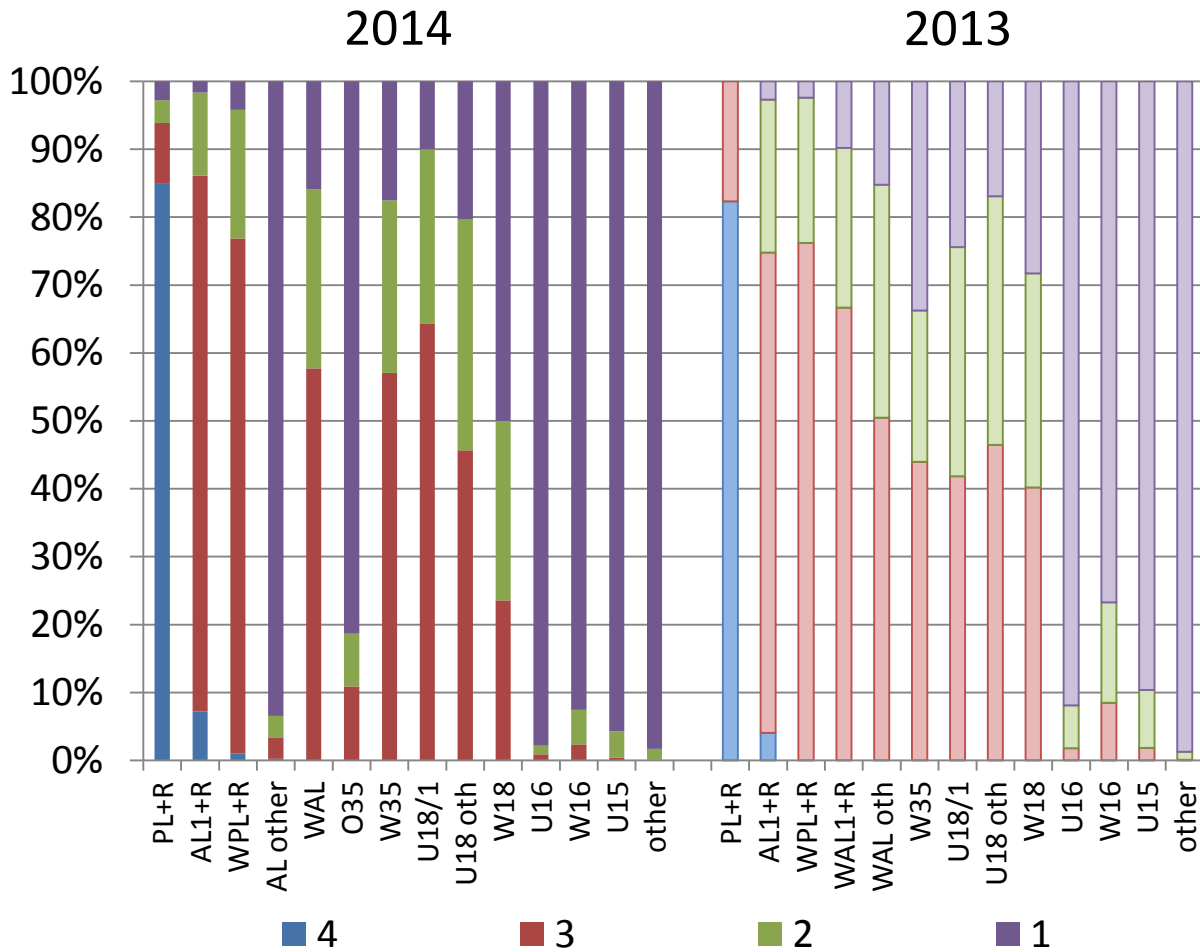
Changes >5%



Key Points:

- Much stronger in U15 & U16 Div 2s & 3s and U14/1
- c. 10% stronger in numerous other Age/Divs
- Much weaker in W13/1 & U12/3
- Nearly 10% weaker in W12s

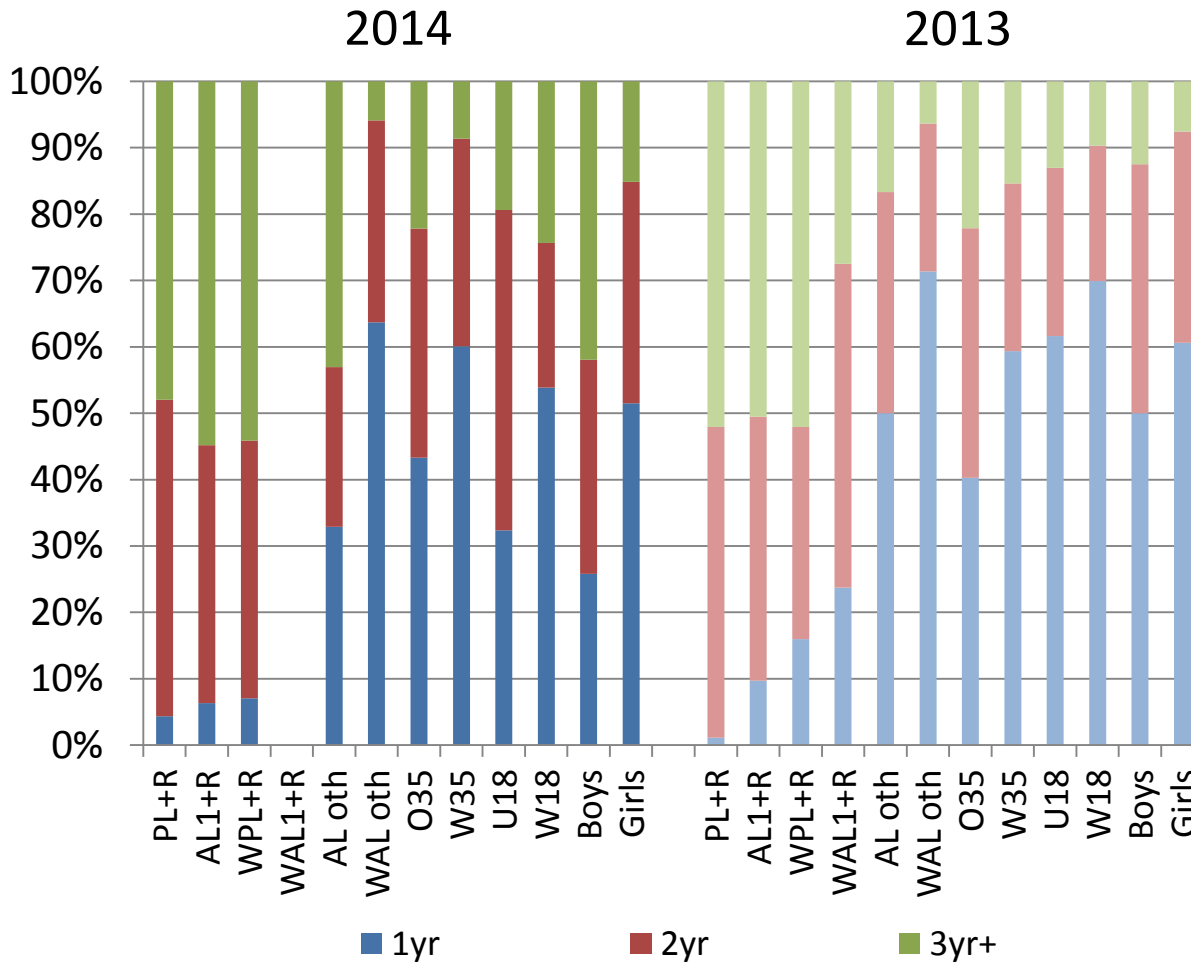
Coverage by No. of Officials



Key points:

- 3 or more officials for PL+R down from 100% to 94%
- 3 or more for AL1+R up from 75% to 86%
- 3 or more for WPL+R slightly up from 76% to 77%
- c. 10-20% better for WAL, W35 & U18/1
- Worse for W18 – down from 40% to 24%

ARs Coverage by AR Experience

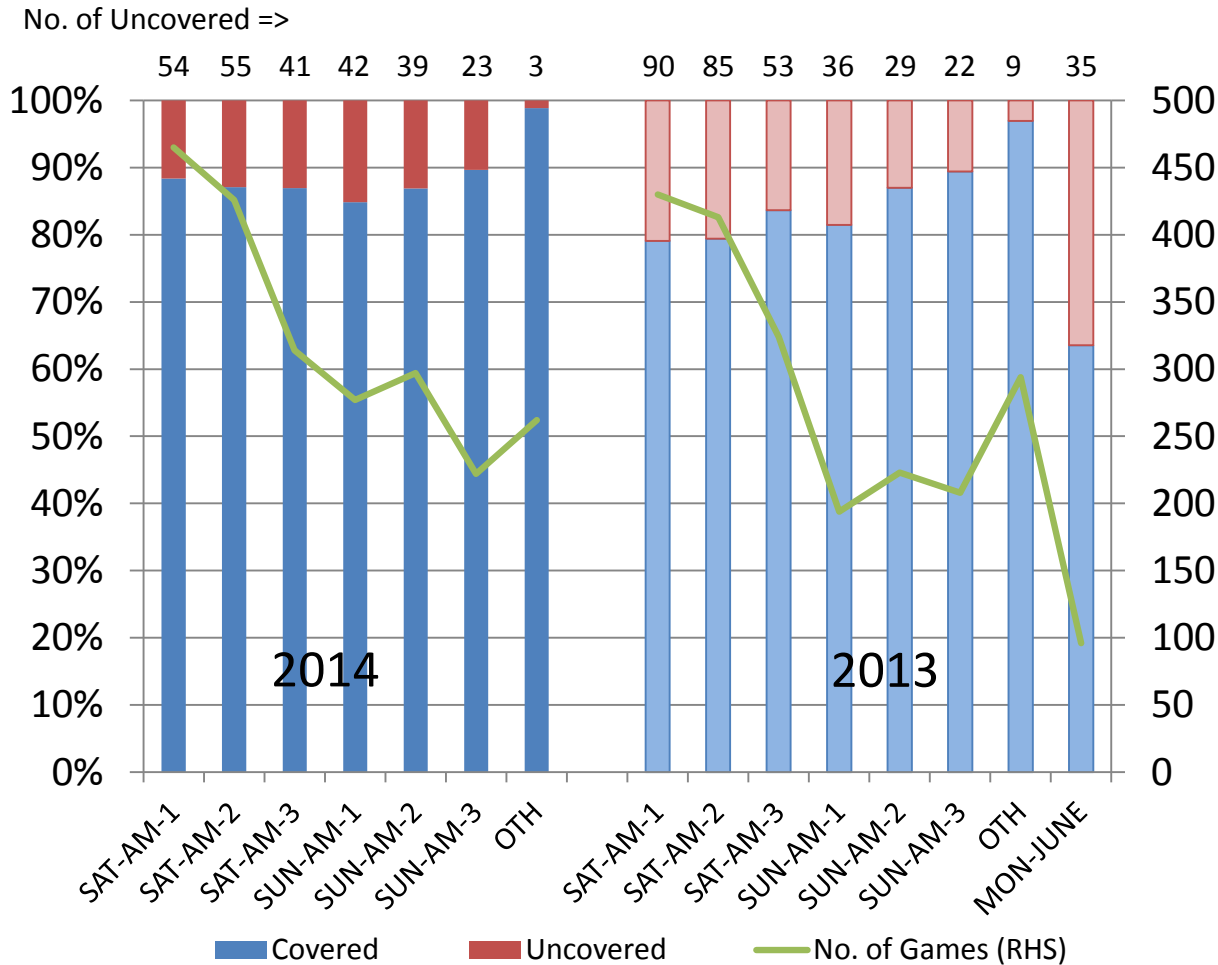


Key Points:

- Generally, same or better across the board
- Continued minor use of 1st yr ARs on PL, WPL & AL1
- 1st yr ARs on U18 down from 62% to 32%
- 1st yr ARs on W18 down from 70% to 54%

COVERAGE FACTORS & ANALYSIS

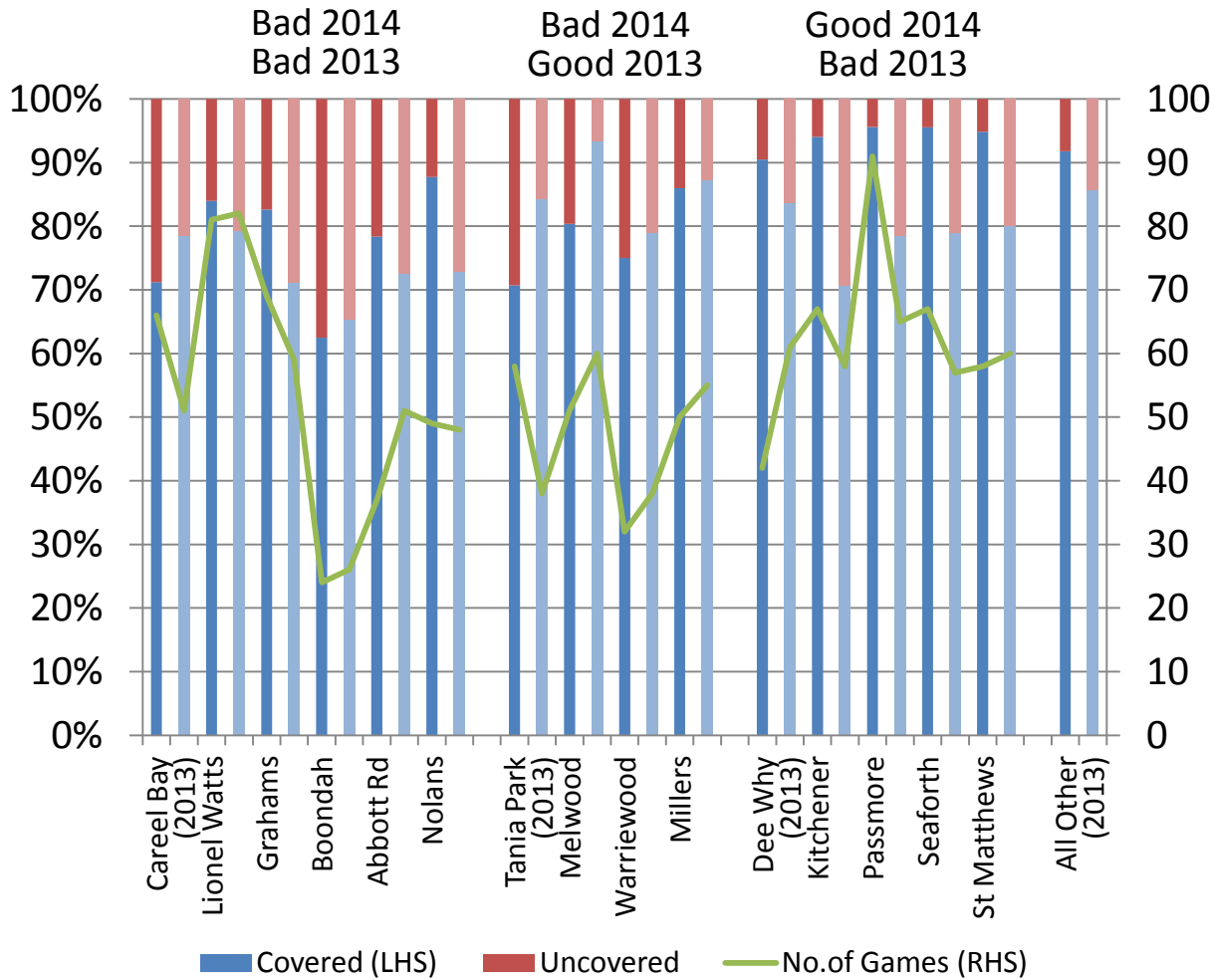
Coverage Factor - KO Time Slot



Key Points:

- 209 more AM games
- But 61 fewer uncovereds
- Nearly 10% better for early Saturday games
- Total AM coverage up from 82% to 87%
- 'Other' – Friday and midweek – not a problem
- No Monday June long weekend games in 2014

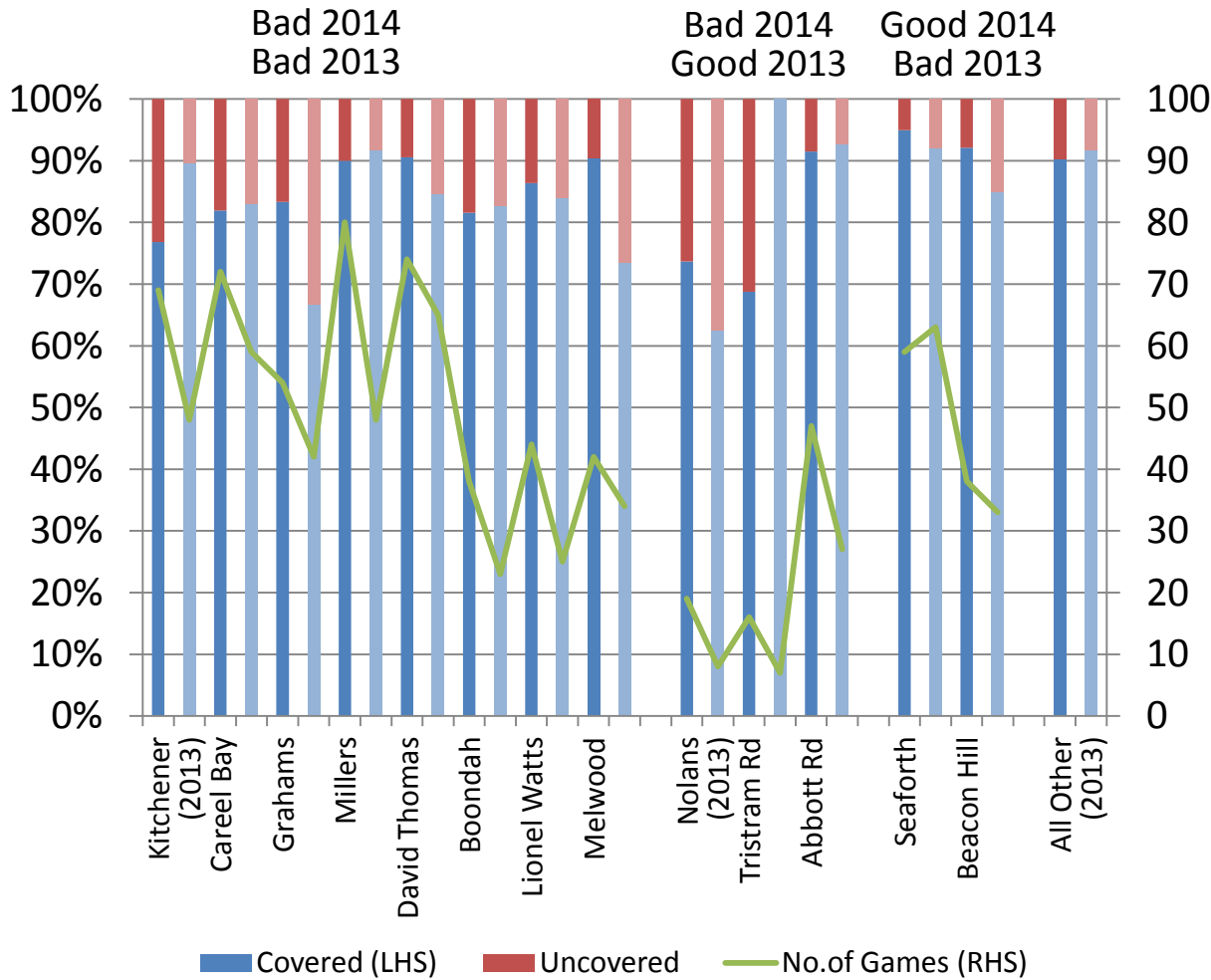
Coverage Factor - Grounds (Sat AM)



Key Points:

- Ground location may be a coverage factor but varies
- ‘Bad’ or ‘Good’ depends on Coverage% & No. of Games
 - Tania ‘bad’ in 2014 as Coverage% down & Game-count up
 - Passmore ‘good’ in 2014 as Coverage% up & Game-count up
- In the worst 10 for coverage in both 2014 and 2013 were Careel Bay, Lionel Watts, Grahams, Boondah (but few games), Abbott Rd & Nolans
- Some were in worst 10 in 2014 but not in 2013 e.g. Tania Park, Melwood
- Others were in worst 10 in 2013 but not in 2014 e.g. Dee Why, Kitchener

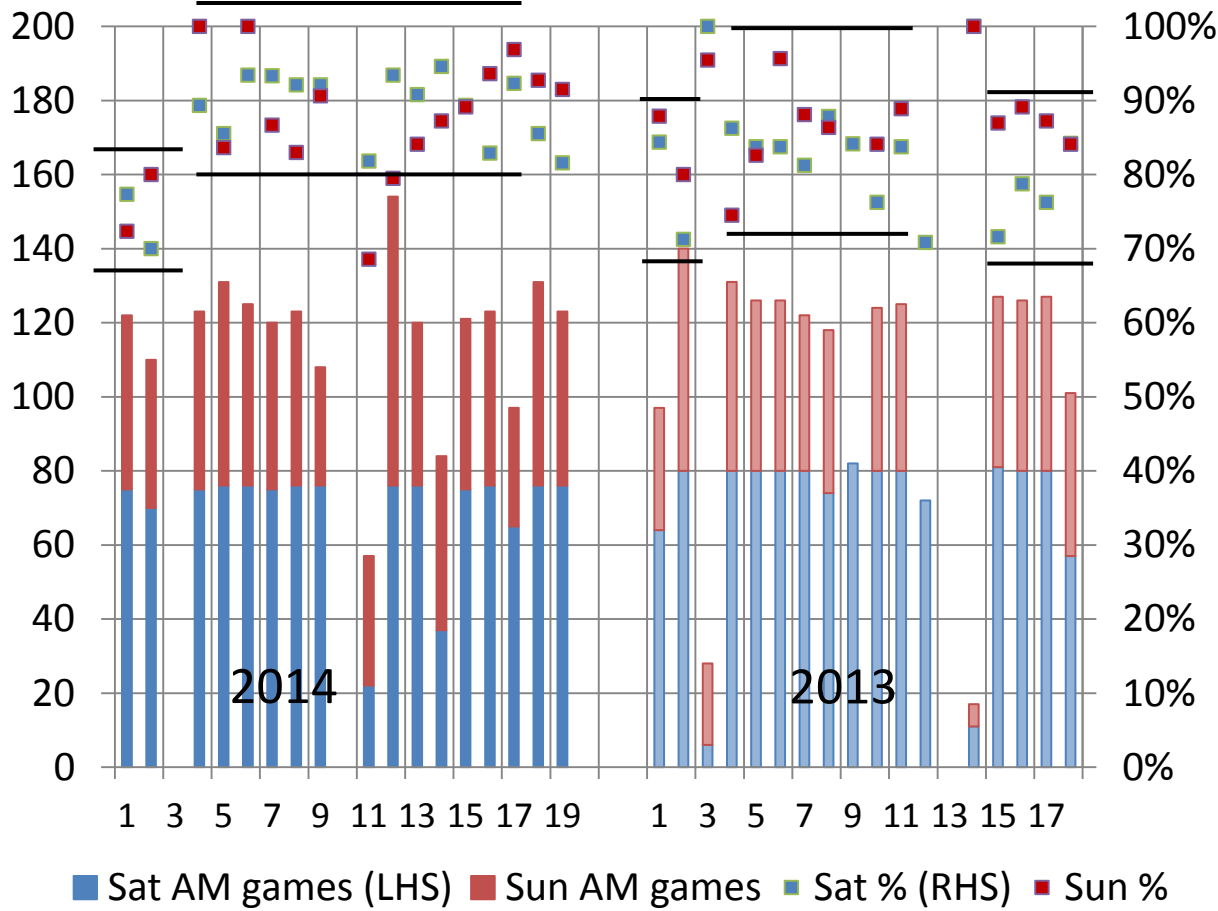
Coverage Factor - Grounds (Sun AM)



Key Points:

- 'Bads' in 2014 & 2013 are more often the same grounds for girls than boys
- Kitchener was 5th 'bad' in 2013 (5 games) but 1st in 2014 (16 games)
- Grahams dropped from 1st to 3rd (14 to 9 games)
- Millers was the same Coverage% but double the no. of games (so 4 uncovered became 8 uncovered in 2014)

Coverage Factor – Week of Season

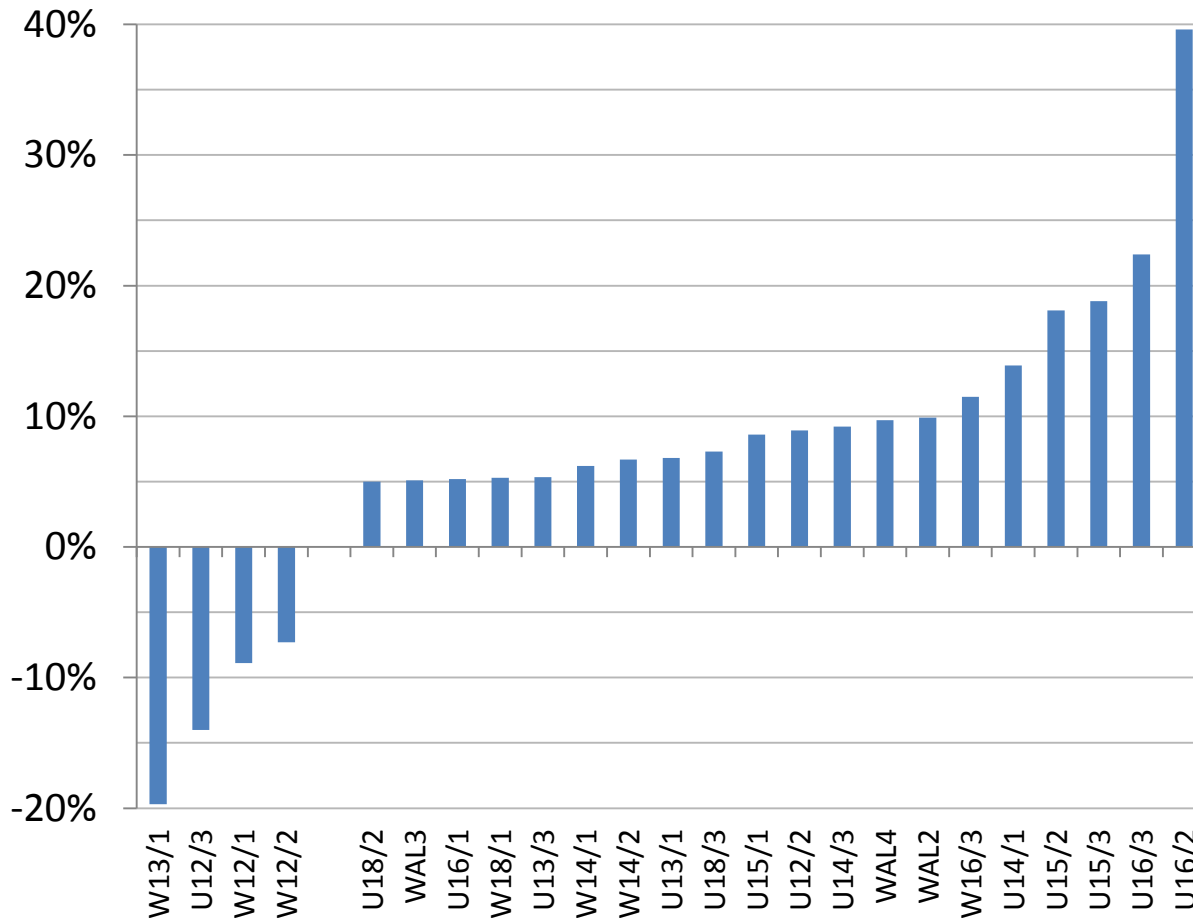


Key Points:

- The 'Start-up' – weeks 1 & 2 is possibly a factor in lower Coverage%
- 'Season Fatigue' is possibly a year-end, pre-finals factor – maybe in 2013, not evident in 2014
- 2014 Wk10 was a wash-out, Wk11 was a partial wash-out, Wk12 was a catch-up Sunday
- 2014 & 2013 School Hols - Wks 2, 3, 4 & 13, 14, 15

%Coverage – 2014 vs 2013

Changes >5%



Key Points:

- Much stronger in U15 & U16 Div 2s & 3s and U14/1
- c. 10% stronger in numerous other Age/Divs
- Much weaker in W13/1 & U12/3
- Nearly 10% weaker in W12s

Change in Coverage for certain Age/Divs

Age / Div	Less coverage%
W13/1	<p>From 2013 98.3% (57 of 58) to 2014 79.7% (51 of 64)</p> <p>Drop in coverage exaggerated by very high 98.3% 2013 coverage</p> <p>No obvious factors for weaker coverage, probably multiple factors</p> <ul style="list-style-type: none"> • covered all 9 08:30 games, only covered 23 of 32 10:00 games • 5 of 12 uncovered at Kitchener, Careel Bay and Grahams but those grounds were not 'bad' for W13/1 in 2013 (only 1 of 17 uncovered) • 'Start-up' was 3 uncovered (vs 0 in 2013), 'School Hols' not especially poor (3 of 14 uncovered) • U15 refs dropped coverage from 30 games to 12 but U16 rose from 7 to 19
U12/3	<p>From 2013 88.1% (52 of 59) to 2014 74.1% (63 of 85)</p> <p>A demanding 44% increase in total number of games (+26), mostly in the early Sat AM timeslots, younger refs were used more but not for all new demand</p> <ul style="list-style-type: none"> • 21 extra games at 08:30 & 10:00 games, coverage 70% vs 87% in 2013 • $\frac{1}{3}$ of all uncovered games (7 of 22) were at Tania (7 uncovered of 13 played there) • uncovered was throughout the season with 4 at 'Start-up' & 5 in 'School Hols' • up to age U15 refs picked up 16 of the 26 extra games, older refs dropped 6

Change in Coverage for certain Age/Divs

Age / Div	Less coverage%
W12/1	<p>From 2013 88.3% (53 of 60) to 2014 79.4% (54 of 68)</p> <p>Games were earlier – 30 at 08:30 vs 8 in 2013 – where coverage more difficult, used our U14 & U15 refs less</p> <ul style="list-style-type: none"> • many games at Careel Bay (15) & Kitchener (14) but not more of a problem than any other ground – these 43% of games contributed 36% of uncovereds • ‘Start-up’ and ‘School Hols’ not especially poor (3 of 14 uncovered) • Less use of U14 & U15 refs – 26 games vs 41 in 2013
W12/2	<p>From 2013 93.2% (69 of 74) to 2014 86.4% (57 of 66)</p> <p>8 fewer games but 4 more uncovered - no obvious influence from kick-off time, ground location or season week</p> <ul style="list-style-type: none"> • Less games by U14 & U15 refs – 28 games vs 53 in 2013 • But some of the gap picked up by U16 refs – 17 games vs 1 in 2013

Change in Coverage for certain Age/Divs

Age / Div	More coverage%
U16/2	<p>From 2013 58.7% (27 of 46) to 2014 98.2% (55 of 56)</p> <p>Improved coverage exaggerated by very low 58.7% 2013 coverage</p> <p>Main factor seems to be better use of U18 & U19 refs and more use of Seniors</p> <ul style="list-style-type: none"> • covered 43 of 44 08:30 games (20 of 31 in 2013) • U18 refs did 7 games (vs 2 in 2013), U19 refs did 13 games (vs 1) • Seniors did 34 games – double the 17 in 2013
U16/3	<p>From 2013 62.1% (36 of 58) to 2014 89.6% (86 of 96)</p> <p>A demanding 65% increase in total number of games (+38)</p> <p>Main factor seems to be better use of U18 & U19 refs and more use of Seniors</p> <p>Some limiting factors in 11:30 games and grounds</p> <ul style="list-style-type: none"> • U18 refs did 9 games (vs 1 in 2013), U19 refs did 14 games (vs 2) • Seniors did 54 games – double the 26 in 2013 • Timeslot coverage lowest at 11:30 – 82% of 11 games • Careel Bay & Boondah had 17% of games but 60% of uncovereds

Change in Coverage for certain Age/Divs

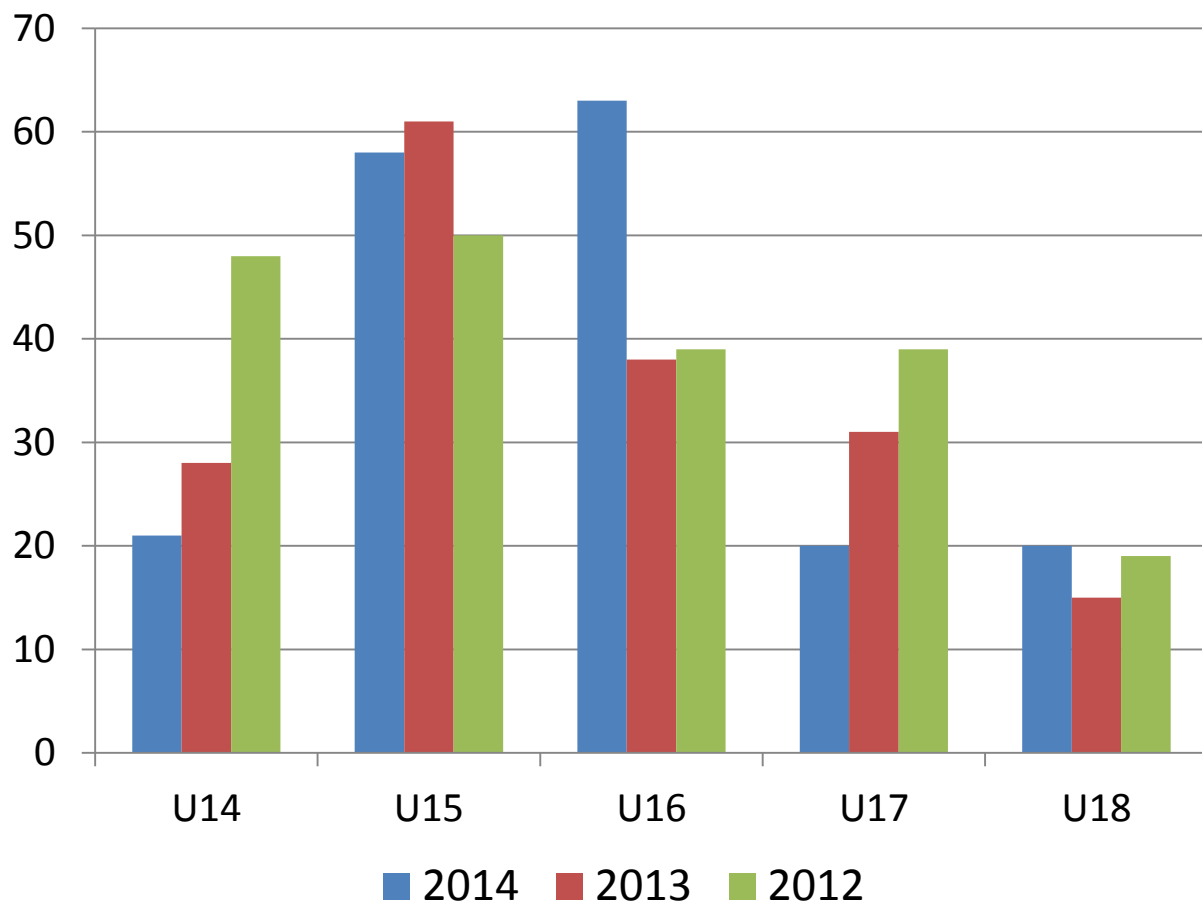
Age / Div	More coverage%
U15/3	<p>From 2013 69.4% (59 of 85) to 2014 89.4% (76 of 85)</p> <p>Main factor seems to be more use of Seniors and U18 refs</p> <ul style="list-style-type: none"> • Fewer 08:30 games (41 vs 50 in 2013) & more 10:00 games (27 vs 17) • Seniors did 58 games – up from 40 in 2013 • U18 refs did 11 games (vs 2 in 2013)
U15/2	<p>From 2013 75.4% (49 of 65) to 2014 95.3% (61 of 64)</p> <p>All 3 uncovereds were Abbott Road games but of varied dates and times</p> <p>Otherwise, more games from Seniors and about the same from Juniors</p> <ul style="list-style-type: none"> • Seniors did 51 games (up from 34) • Juniors slightly down from 14 to 10 games

Change in Coverage for certain Age/Divs

Age / Div	More coverage%
U14/1	<p data-bbox="426 332 1232 368">From 2013 71.7% (43 of 60) to 2014 86.8% (59 of 68)</p> <p data-bbox="426 394 1644 429">Seems to be a mix of factors – Season Week, Grounds & use of U16 refs/Seniors</p> <ul data-bbox="426 455 1574 668" style="list-style-type: none"><li data-bbox="426 455 1535 491">• In 2013, 'Start-up' & 'School Hols' were 8 uncovered, but only 4 in 2014<li data-bbox="426 512 1574 548">• In 2013, only 19 of 30 at 'bad' grounds were covered, but 29 of 33 in 2014<li data-bbox="426 572 996 608">• U16 refs did 17 games (vs 3 in 2013)<li data-bbox="426 632 996 668">• Seniors did 31 games (vs 20 in 2013)

ACTIVITY ANALYSIS

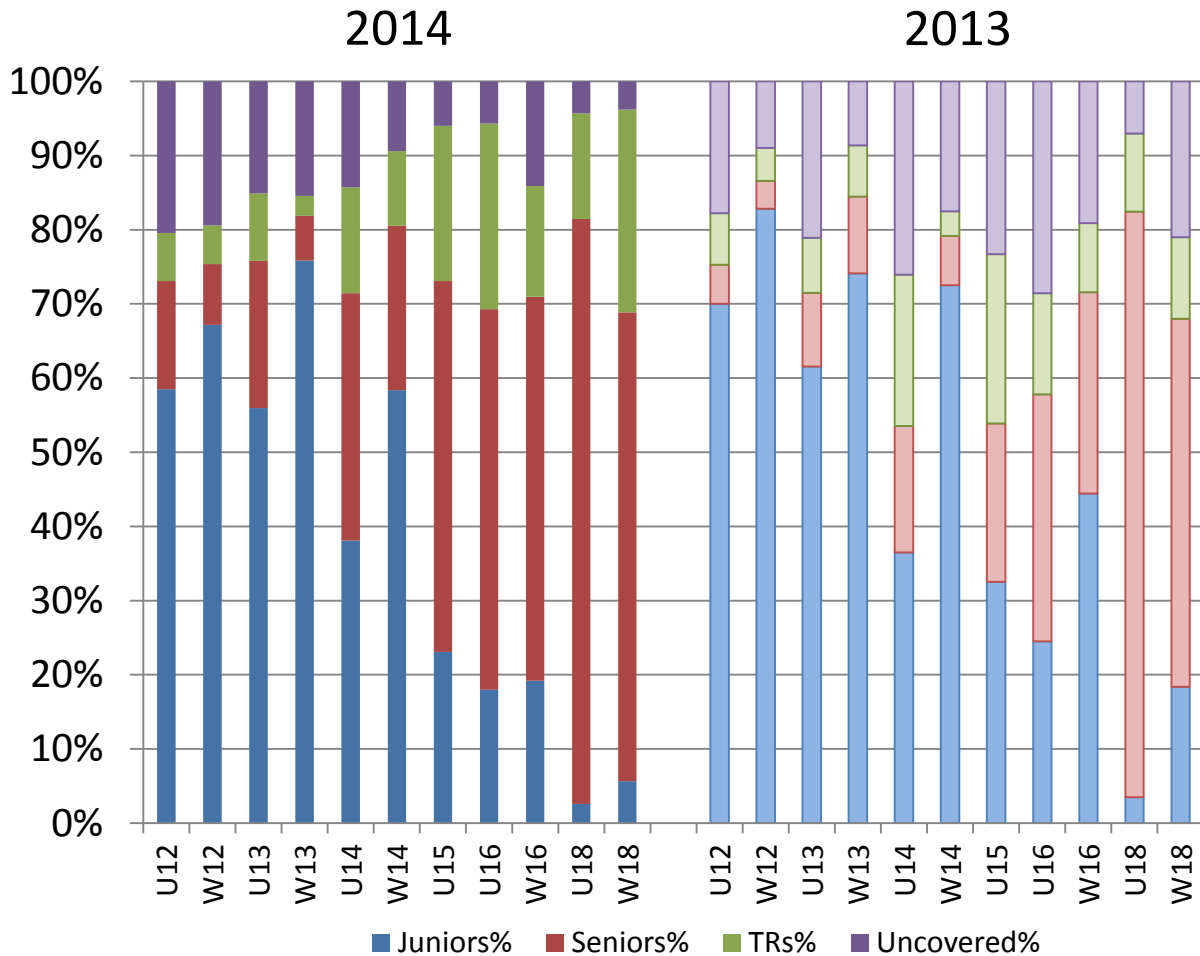
Junior Refs by Age – 2014 vs 2013, 2012



Key Points:

- 7 fewer U14 refs
- Held high levels in U15s (58)
- 25 more U16s to 63
- 11 fewer U17s
- 5 more U18s

% Ref Category vs Game Age – 2014 vs 2013

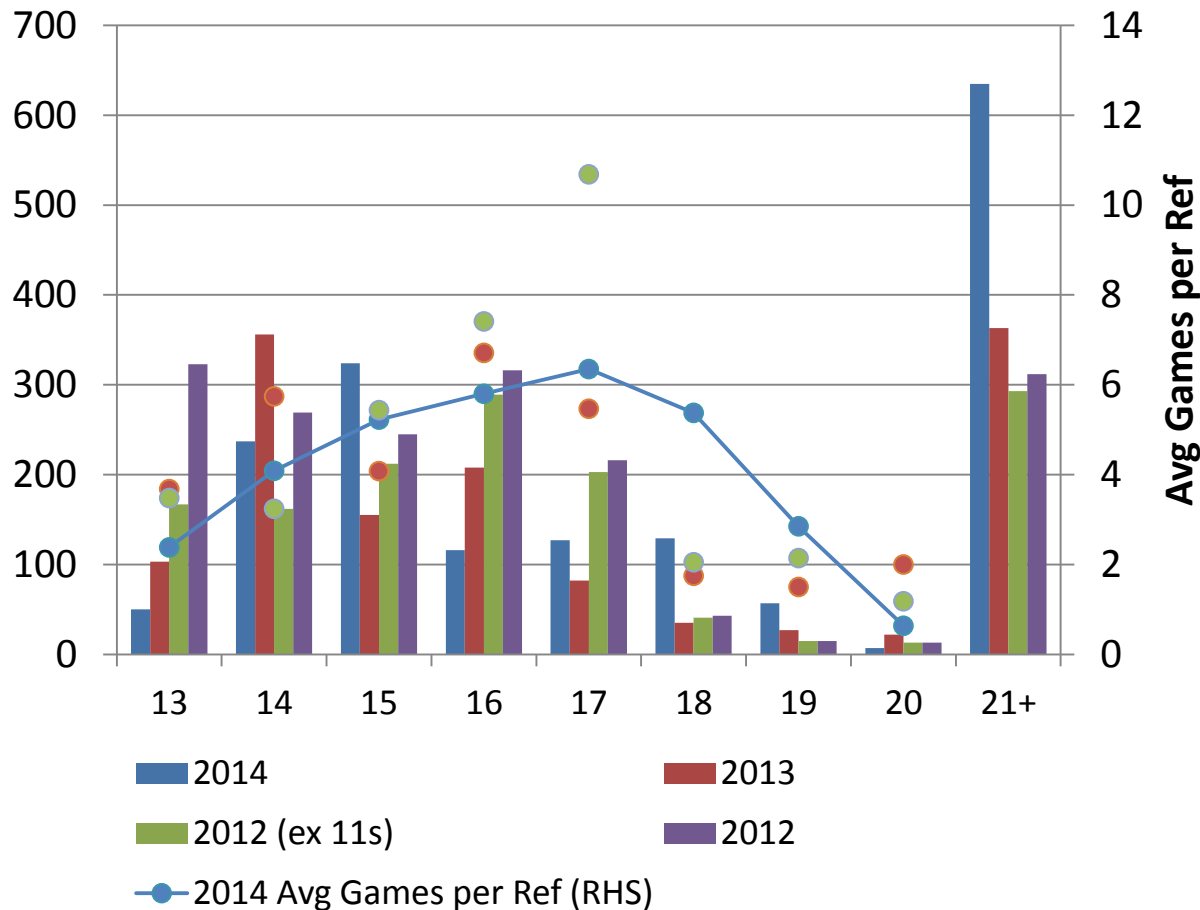


Key Points:

- Generally, less use of Juniors & more use of back-up Seniors
- Mostly, the Seniors-Juniors offset led to better coverage (esp. U14, U15, U16)
- But sometimes not enough offset & coverage was worse (e.g. U12, W12 & W13)

Total Centres by Ref Age – 2014 vs 2013, 2012

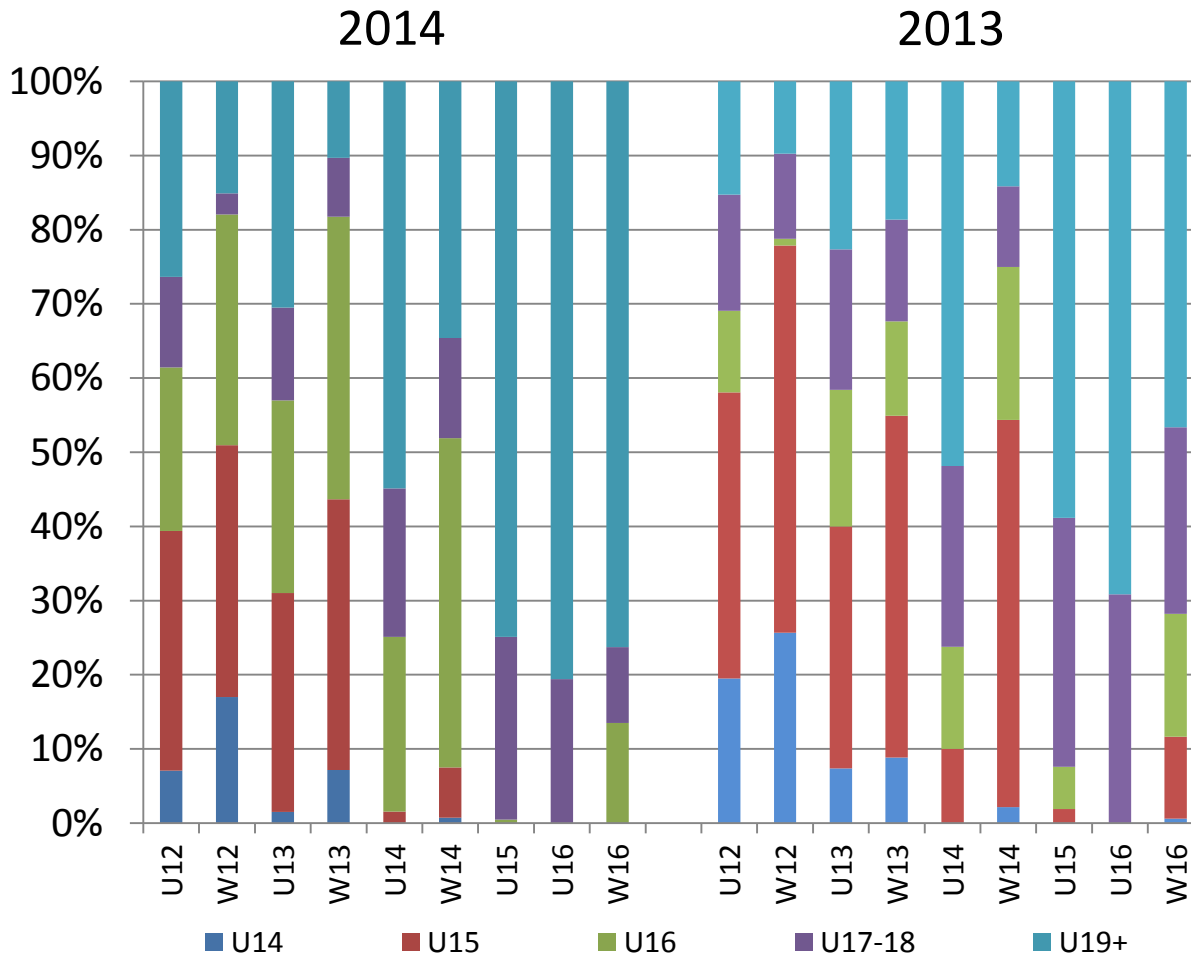
Junior Games



Key Points:

- Large jump in games by Refs aged 21+ (to 635 from 363)
- 116 more games from Refs aged 18 & 19 – 6 more Refs but increase mainly due to more games per Ref
- 92 fewer games from 16yo Refs – but 11 fewer Refs and avg activity not much lower (5.8 vs 6.7 Avg Games per Ref)
- 24 more 15yo Refs did 209 more games at a 25% higher activity rate (5.2 vs 4.1 Avg Games per Ref)
- Lower use of 13 & 14yo Refs – fewer Ref numbers and easing in 1st yrs as ARs rather than Centres

% Ref Age vs Game Age – 2014 vs 2013



Key Points:

- 12s & 13s games covered less by 11 fewer U14 & U15 Refs and more by 24 more U16 Refs
- U16 Refs had the highest share of 14s games (as expected, given their higher numbers)
- Fewer U17 & U18 Refs required more use of Seniors

Game Days by Ref – 2014 vs 2013, 2012

Juniors

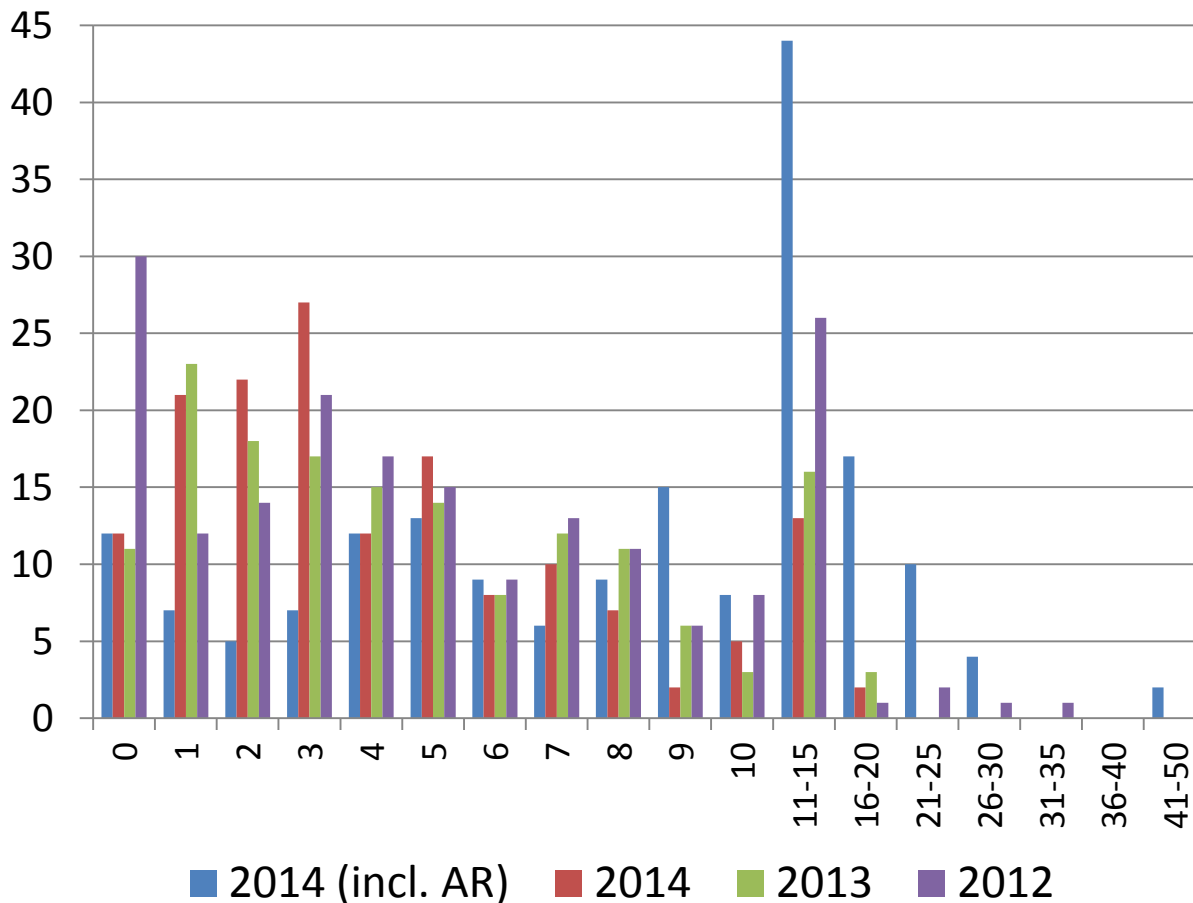


Chart explanation:

For example -

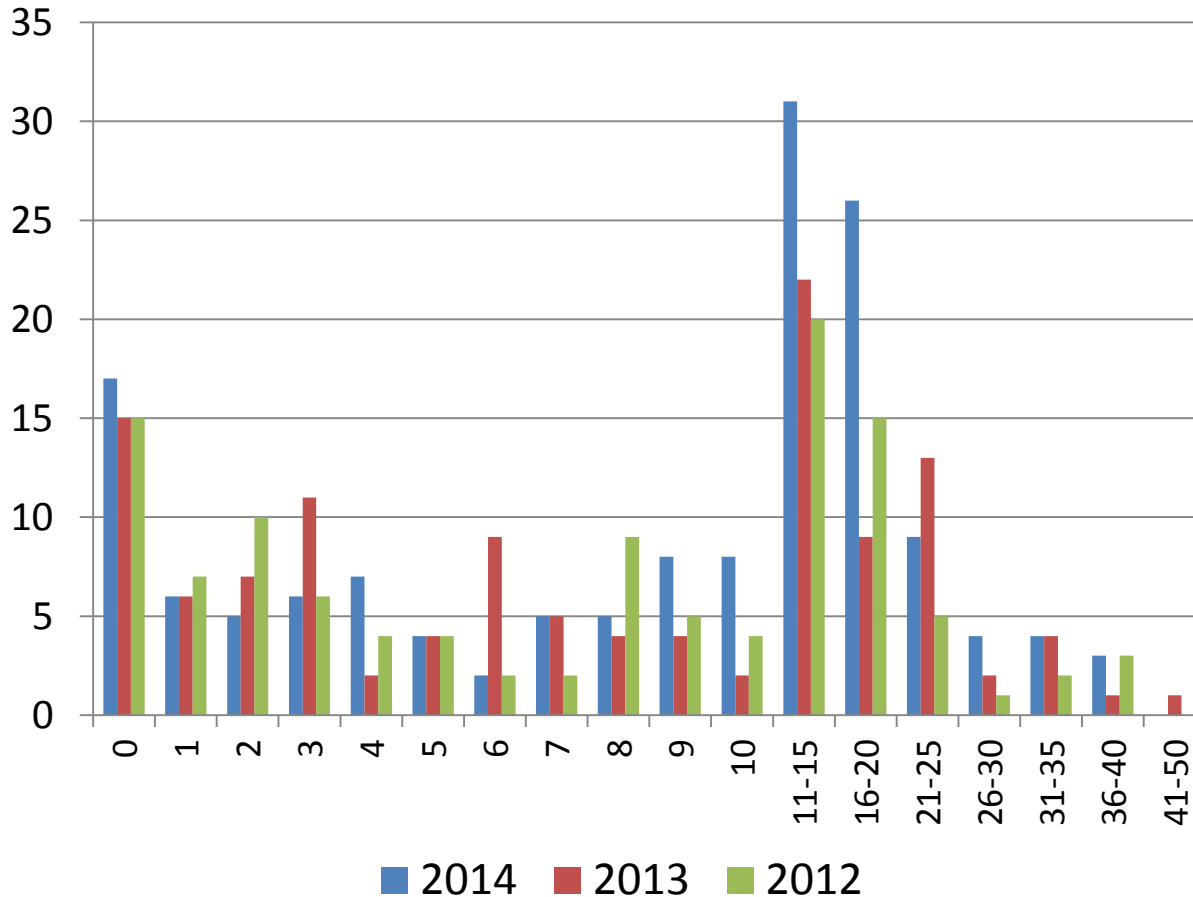
- 21 refs only centre-ref'd on 1 day in the 2014 season
- But this drops to 7 refs when also counting AR-only days
- 44 refs were AR &/or Centre on 11-to-15 days, compared to 13 who were Centre on 11-to-15 days

Key Points:

- Generally, Juniors 'worked' as Centres on fewer game-days than in 2013
- But their total 'work-days' were much higher when also counting their AR-only days

Game Days by Ref – 2014 vs 2013, 2012

Seniors

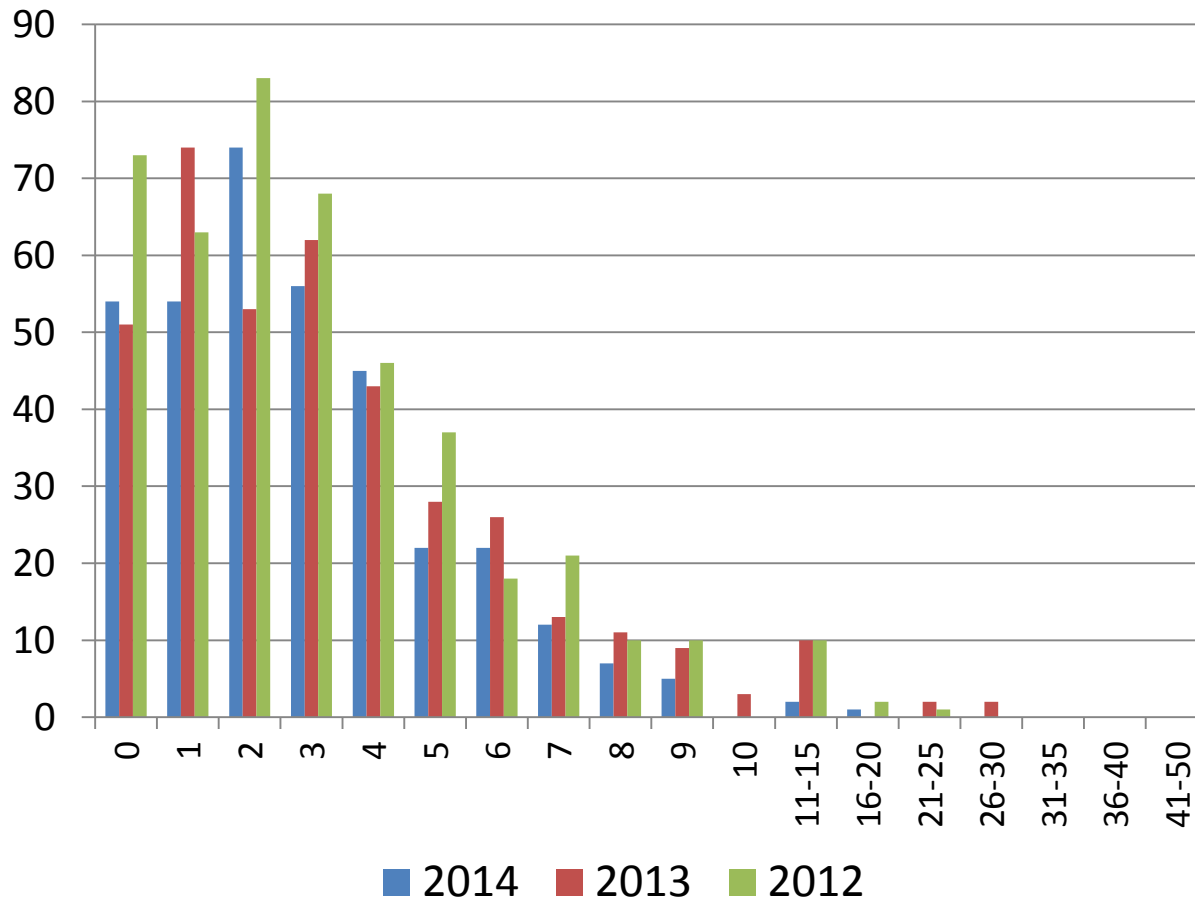


Key Points:

- Generally, Seniors ‘worked’ more often
- Number of Seniors least active (on 0-to-5 game-days) was unchanged
- But numbers active on 8 game-days or more increased from 62 to 98
- With a particular activity bulge in 11-to-20 game-days, where numbers active nearly doubled from 31 to 57 refs

Game Days by Ref – 2014 vs 2013, 2012

Team Refs

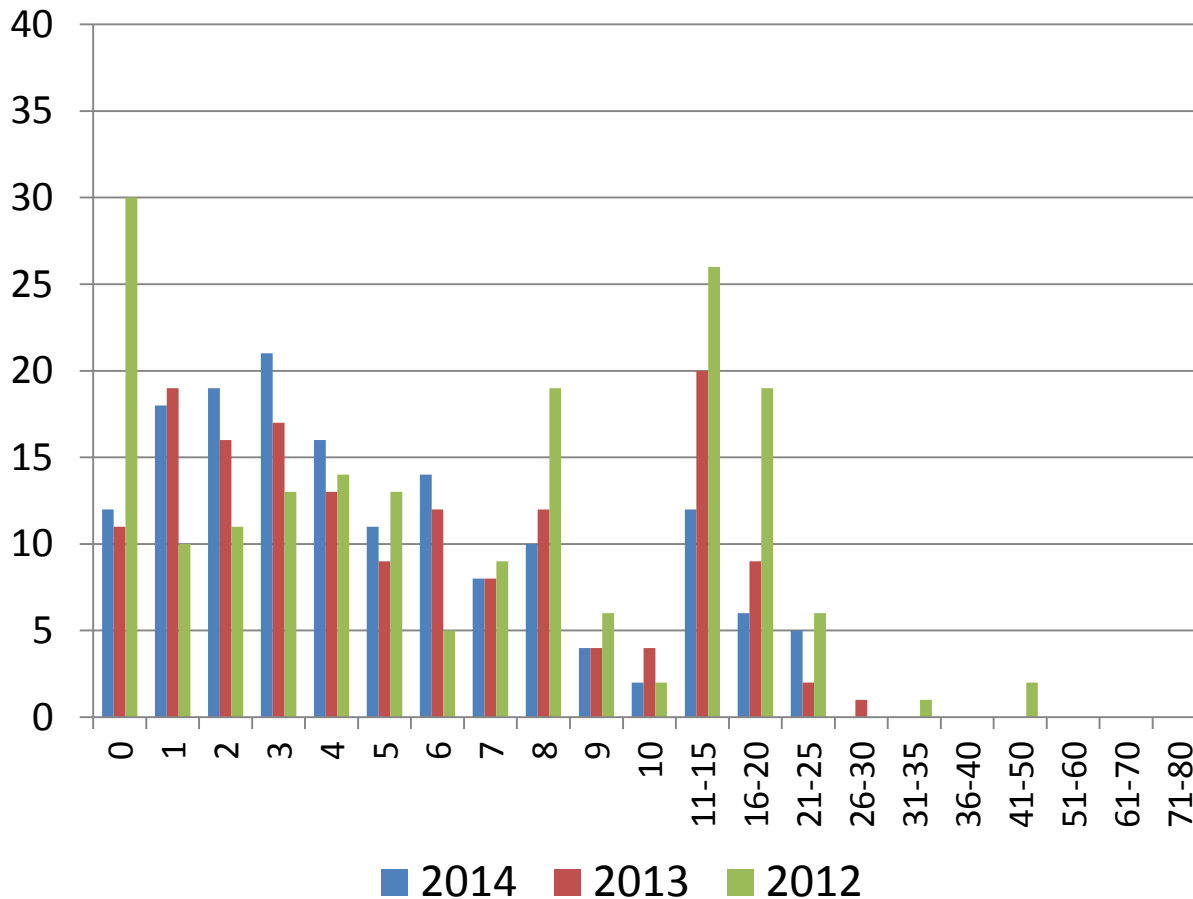


Key Points:

- Team Ref activity levels were broadly unchanged or slightly lower
- Though, the most frequent activity level was 2 days vs 1 in 2013, the average dropped from 3.5 to 2.9 game-days

Total Centres by Ref – 2014 vs 2013, 2012

Juniors

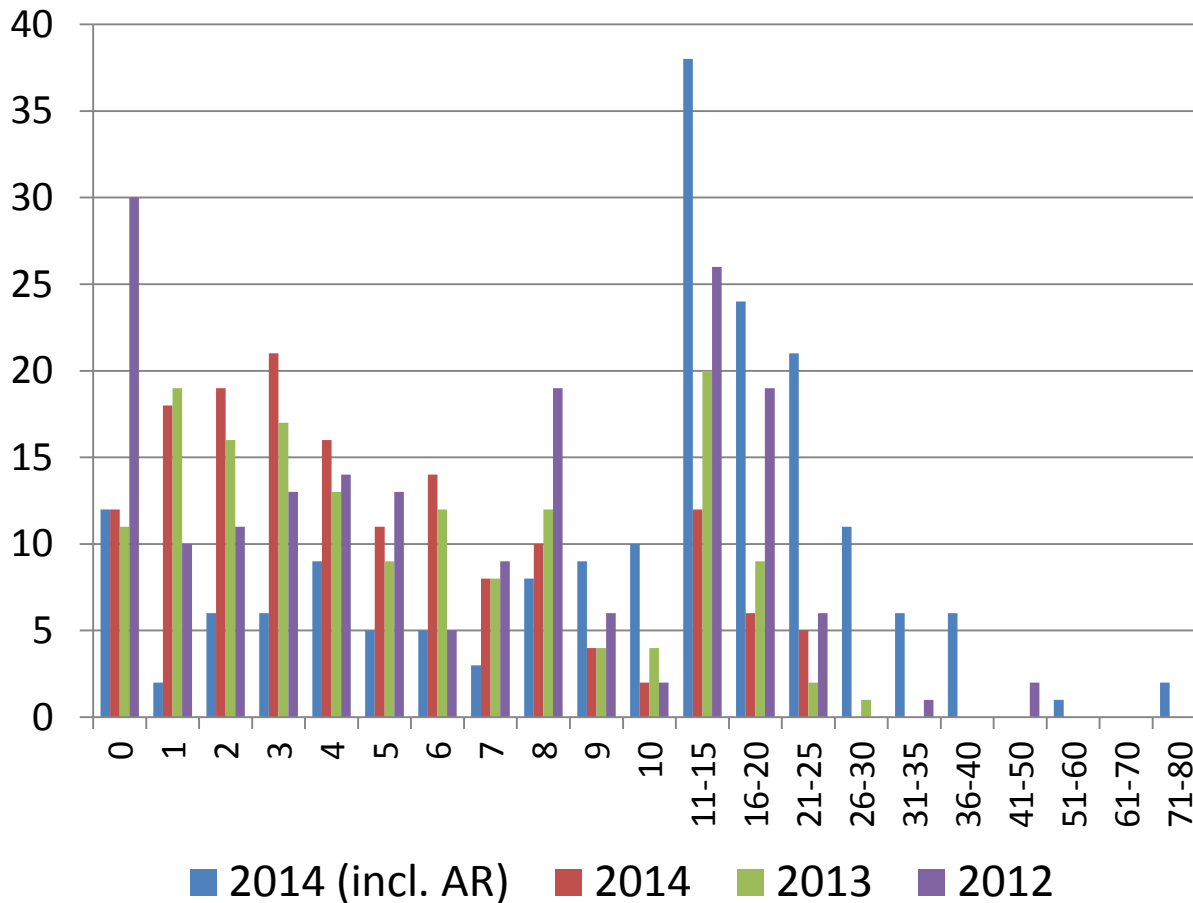


Key Points:

- Generally, lower Centre-activity by Juniors – Avg Centres per Ref dropped from 6.3 to 5.7
- And the % of Juniors doing 11+ Centres dropped from 20% to 15%
- However, Juniors activity was much higher when also counting AR games

Total Games by Ref – 2014 vs 2013, 2012

Juniors

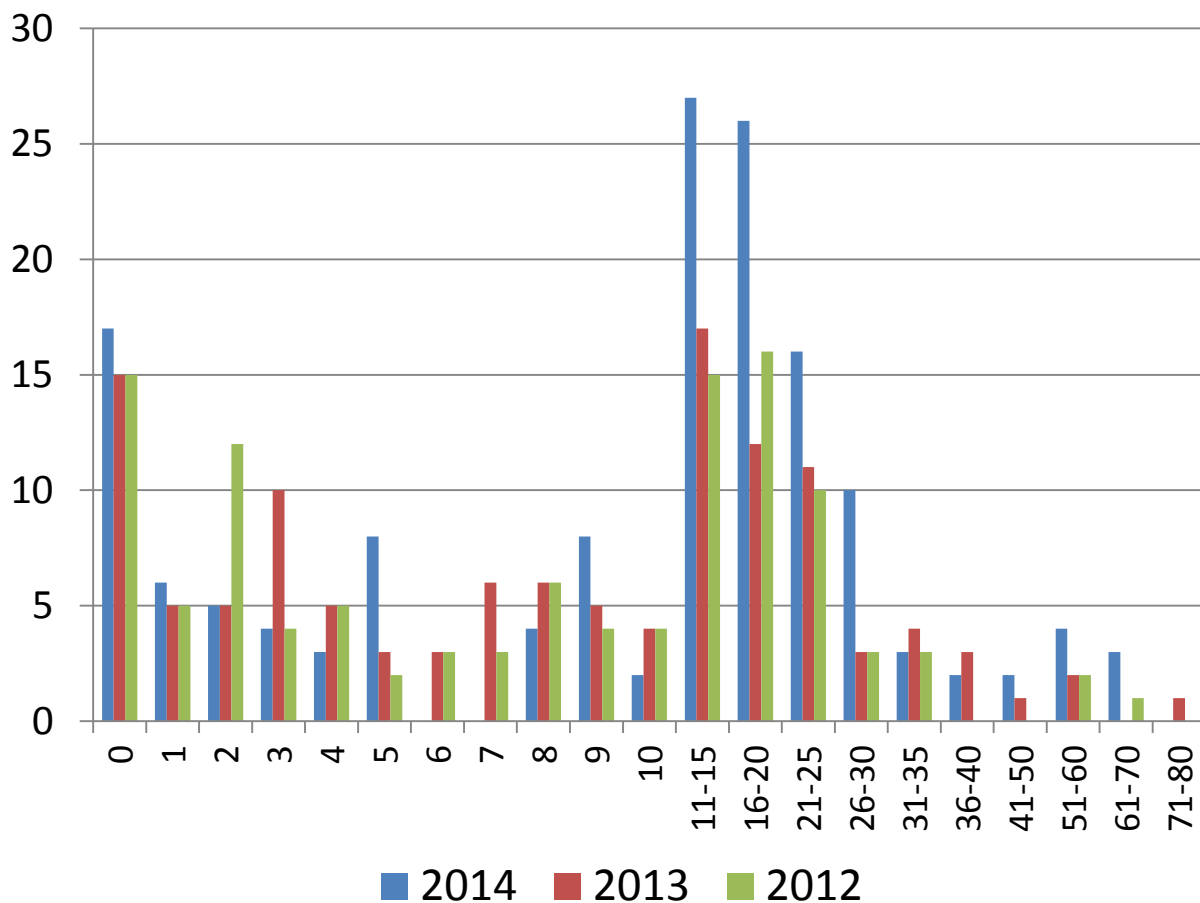


Key Points:

- Juniors are a lot more active when their AR games are added to their Centres

Total Centres by Ref – 2014 vs 2013, 2012

Seniors

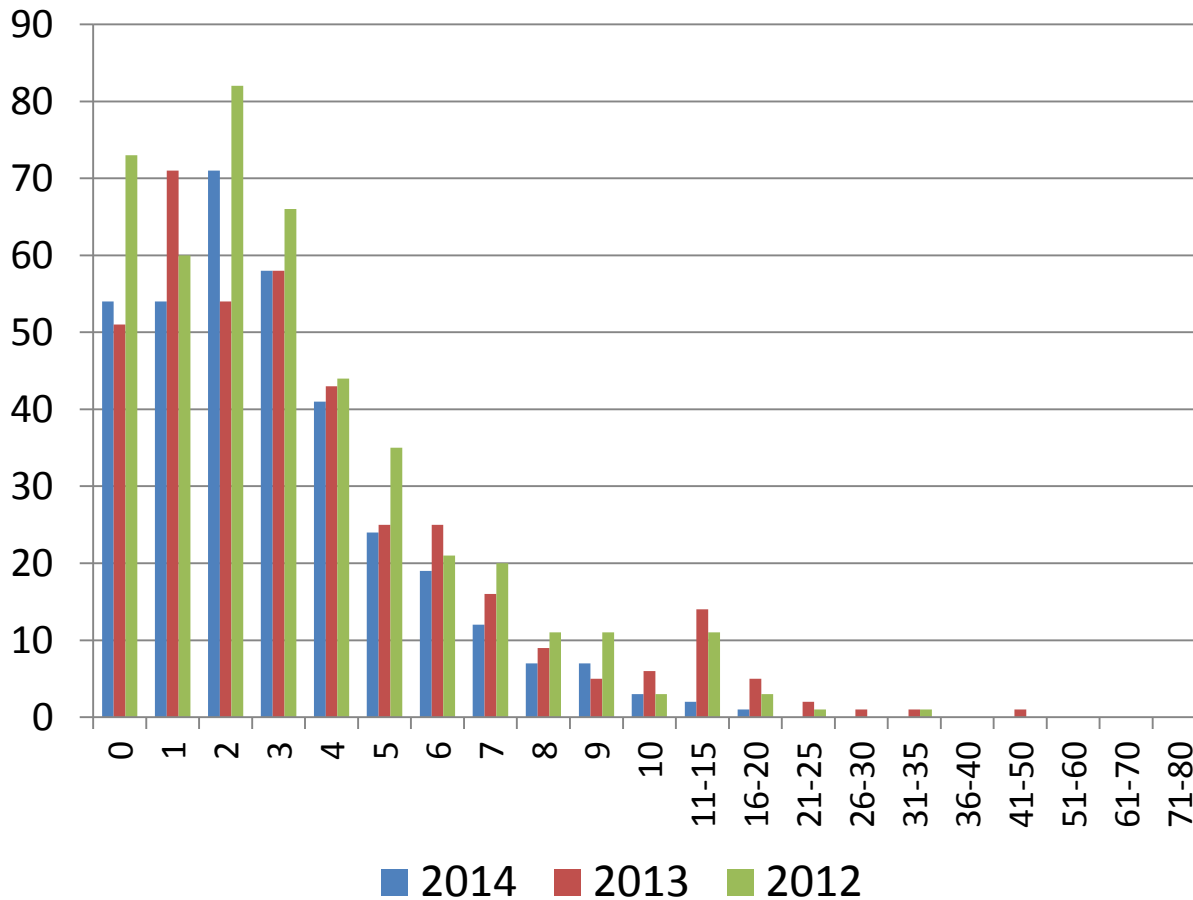


Key Points:

- The increased activity by Seniors is plain to see
- Significant increases in the numbers of Refs doing 11-to-30 games in 2014

Total Centres by Ref – 2014 vs 2013, 2012

Team Refs



Key Points:

- Activity by Team Refs is little changed in 2014
- The vast majority of Team Refs do 4 or fewer games per season