



MWFRA Modified Laws

Half Lengths

Age	Duration of Half
U12	25 minutes
U13	30 minutes
U14	30 minutes
U15	35 minutes
U16	35 minutes
U18+	45 minutes



In MWFA junior matches (U12-U16), there is **no** stoppage time played.

Ball Size

Age	Ball Size
U12	Size 4
U13	Size 4
U14	Size 5
U15	Size 5
U16	Size 5
U18+	Size 5





MWFRA Modified Laws

25 Metre Rule (U13-U14)

What is the 25m Rule?

The purpose of the 25m Rule is to facilitate younger age groups playing out from the back with reduced pressure when they are awarded a goal kick or free kick in their penalty area.

The Clearance Zone is a rectangular area bounded by the touchlines, the goal line and an imaginary line parallel to and 25m from the goal line. This line must be indicated by cones, poles or other markings to assist the referee. Referees are expected to undertake a field check which should include ensuring that the Clearance Zone has been marked out. If there are no cones/poles set up to indicate the Clearance Zone, the referee is required to ask the home team for them to set up the Clearance Zone.



25m Rule Procedure:

The 25m Rule only applies to the U13 and U14 age groups and is in operation for goal kicks and also for free kicks awarded to the defending team in the penalty area.

- For a goal kick, the goalkeeper of the defending team must take the kick
- For a free kick to the defending team in the penalty area, any player from the defending team may take the kick
- The ball is in play when it is kicked, clearly moves, and before becoming stationary, is next touched by a second player from the defending team within the Clearance Zone
- Opponents must be outside the Clearance Zone until the ball is in play.

For clarity:

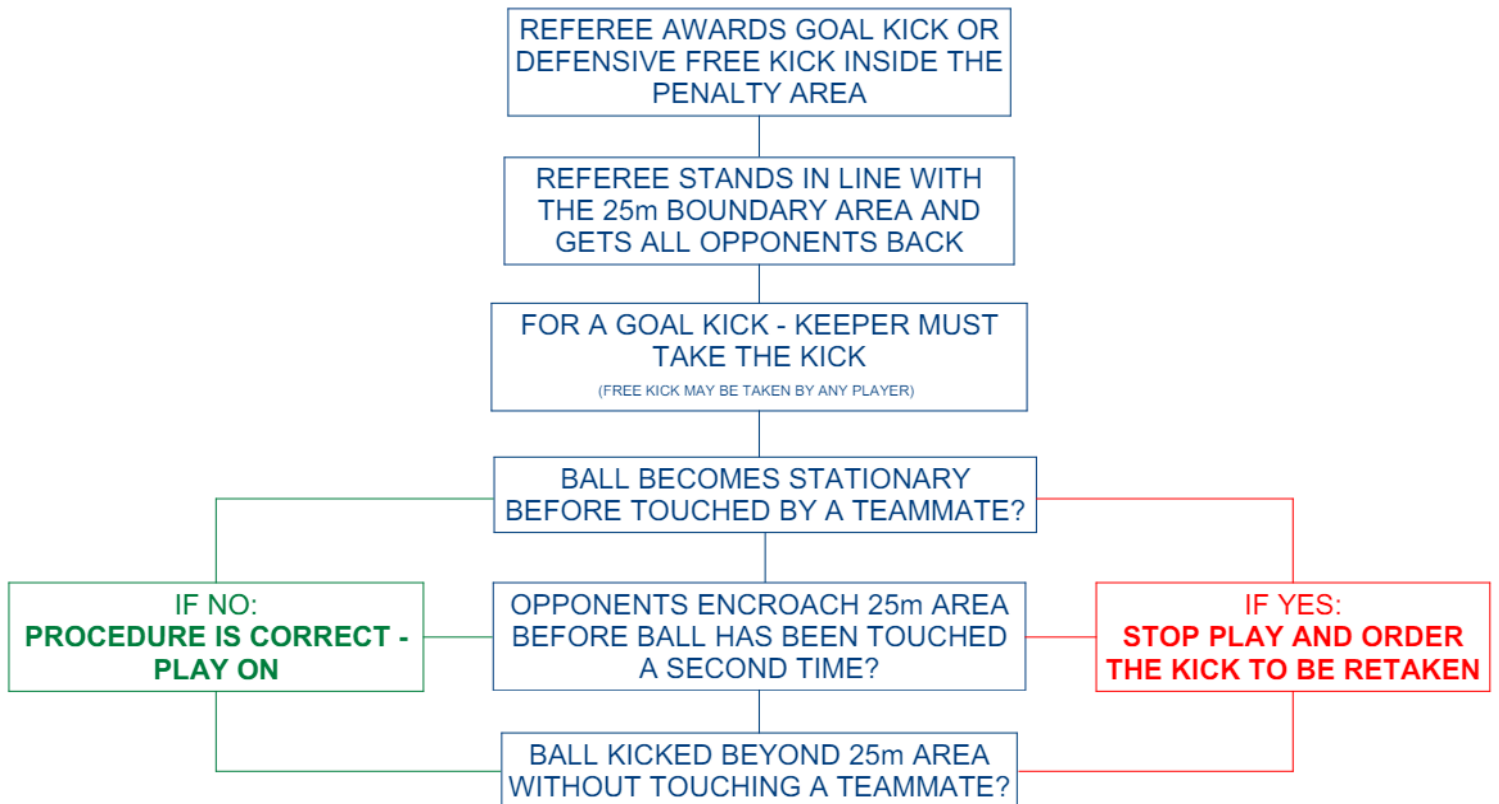
- The ball cannot be kicked directly beyond the Clearance Zone
- Infringement of any aspect of the 25m Rule results in the kick being retaken
- If in the opinion of the Referee, infringement of the 25m Rule is being utilised to waste time by either team, the players guilty will be cautioned
- Once the ball is in play, opponents are permitted to enter the Clearance Zone and challenge for possession of the ball.
- The Clearance Zone does not apply to free kicks to the defending team outside of the penalty area.



MWFRA Modified Laws

25 Metre Rule (U13-U14)

25m Rule Process:





MWFRA Modified Laws

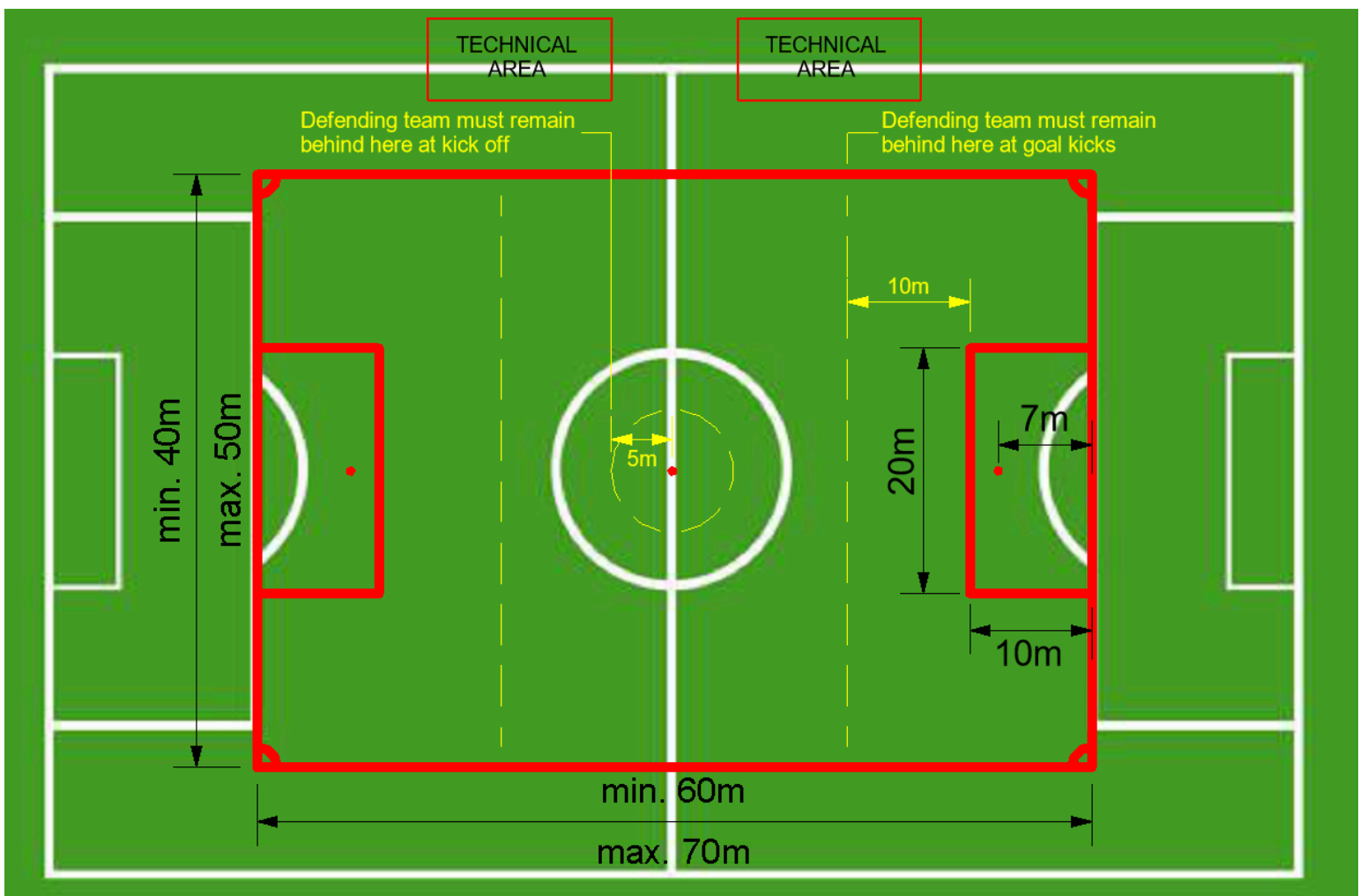
U12 Modified Laws

Under 12 competitions in 2024 will play according to modified Laws of the Game.

All FIFA Laws of the Game should be applied except for the scenarios listed below:

- At free kicks, corner kicks, penalty kicks and kick offs - until the ball is in play, all opponents must remain at least **5m** from the ball.
- At goal kicks - all opponents must remain at least **10m** from the edge of the penalty area until the ball is in play. Goal kicks can be taken from anywhere within the penalty area.

U12 Field of Play Diagram:





MWFRA Modified Laws

U12 Modified Laws

Number of Players	9 players on a team , one of which must be a goalkeeper. Maximum of 5 substitutes. Games must not commence or continue with fewer than 7 players.
Duration of Match	25 minute halves
Ball Size	Size 4
Field Dimensions	Length: min. 60m - max. 70m Width: min. 40m - max. 50m
Goal Size	Height: 2m - Width: 5m Portable goals must be secured to the ground and not be unsafe.
Field Markings	Painted Lines. Cones/Markers are acceptable.
Penalty Area	Depth: 10m - Width: 20m
Sanctions	Yellow and Red cards are applicable in U12.
Temporary Dismissals (Sin-Bin)	Any player who is guilty of dissent should be sent to the sin-bin. The sin-bin period for U12 is 5 minutes .
Offside	Law 11 applies in all U12 matches.
Free Kicks	Law 13 applies in all U12 matches with the following modifications: <ul style="list-style-type: none"> - Until the ball is in play, all opponents must remain at least 5m from the ball
Penalty Kicks	Law 14 applies in all U12 matches with the following modifications: <ul style="list-style-type: none"> - Penalty mark is 7m from the goal line. - Until the ball is in play, all opponents must remain at least 5m from the ball, except for the goalkeeper who must be standing on the goal line (7m).
Throw-ins	Law 15 applies in U12 matches.
Goal Kicks	Law 16 applies in all U12 matches with the following modifications: <ul style="list-style-type: none"> - Goal kicks can be taken from anywhere within the penalty area. - All opponents must remain at least 10m from the edge of the penalty area until the ball is in play.
Corner Kicks	Law 17 applies in all U12 matches with the following modifications: <ul style="list-style-type: none"> - All opponents must remain at least 5m from the ball until the ball is in play.
Interchange	Unlimited Interchange is permitted in U12.



MWFRA Modified Laws

Temporary Dismissals (Sin-Bin)

All MWFA competitions have approved the use of Temporary Dismissals (sin-bin). It is used as a strategy to manage dissent.

Dissent - Any public display of disagreement by word or action directed at a match official.

Overview:

- Any player who is guilty of dissent should be punished with a yellow card and a temporary dismissal period of:

Age	Temporary Dismissal Period
U12-U14 (game duration ≤ 60 mins)	5 minutes
U15+ (game duration > 60 mins)	10 minutes

- All other cautionable offences are only punished with a yellow card.
- If a player who is already on a caution, receives a yellow card for dissent, the temporary dismissal procedure does not apply. The player should be shown a red card and sent off for receiving a second caution in the same match. The player may not be replaced or substituted.

Temporary Dismissal Procedure:

- A temporary dismissal incurs a caution – yellow card for the offence of ‘dissent’ by word or action, applicable to on-field players only (including goalkeepers).
- The referee shows the offending player a yellow card for ‘dissent’ by word or action towards any match official and points with both arms to the technical area.

Time Keeping:

- After the player has left the field of play, the temporary dismissal period begins from when play is restarted. The referee will manage the timing of the dismissal period by recording the commencement time and take note of the expected completion time. The referee may delegate this to one of ‘The Other Match Officials’.
- Once the period has been completed, the same player may return from the halfway line, only after receiving the referee’s permission, which may be given whilst the ball is in play. The Referee must wait for an appropriate time to call the player back on (similar to an injured player returning to the field). This may result in the dismissal period being slightly extended.



MWFRA Modified Laws

Temporary Dismissals (Sin-Bin)

Substitutions / Interchange:

- A player who has been temporarily dismissed cannot be substituted/interchanged until the end of the period, provided play has been stopped and the team has not used all its permitted substitutes.
- A player serving a temporary dismissal may be cautioned a second time whilst on the sideline for dissent, thus sent-off/Red Card after showing a second caution. A temporarily dismissed player will be subject to a second caution if they enter the field without the referee's permission, equating to a send-off/Red Card.

If play is stopped:

- If a temporary dismissal period has not been completed at the end of the first half (or second half when extra time is to be played) the remaining part of the period is served from the start of the second half (or start of extra time). The player is permitted to take part in Kicks from the Penalty Mark (penalty shoot-out). Stoppage time added to the end of a half counts towards the temporary dismissal period, applicable only to 90-minute games.
- If play is stopped to caution and temporarily dismiss a player, play is restarted by an indirect free kick to the opposing team from the place the ball was positioned when play was stopped. If the ball is out of play, play is restarted according to the previous decision (i.e. throw in, corner kick, free kick etc...)

Additional Clarification:

- A temporarily dismissed player is permitted to 'warm-up' under the same conditions as a substitute (i.e. must be wearing a bib etc...)
- It is possible to have more than one player from the same team temporarily dismissed. Thus, if a team is reduced to fewer than seven players at any given time, the game must be abandoned.
- If a team official or substitute guilty of dissent receives a caution, they do not serve the temporary dismissal period. If the ball was in play, an indirect free kick is awarded to the opposing team.